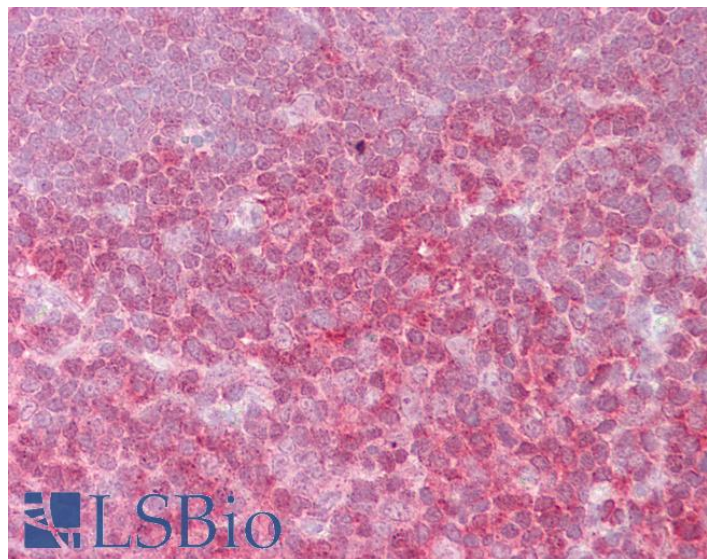


GOAT ANTI-REL ANTIBODY

SKU: EB09878



SPECIFICATIONS

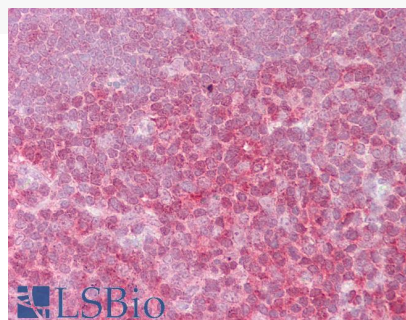
Formulation	Supplied at 0.5 mg/ml in Tris saline, 0.02% sodium azide, pH7.3 with 0.5% bovine serum albumin.
Unit Size	100 µg
Storage Instructions	Aliquot and store at -20°C. Minimize freezing and thawing.
Synonym / Alias Names	REL[v-rel reticuloendotheliosis viral oncogene homolog (avian)]v-rel reticuloendotheliosis viral oncogene homolog[v-rel avian reticuloendotheliosis viral oncogene homolog]oncogene REL, avian reticuloendotheliosis[C-Rel proto-oncogene protein]C-Rel
Accession ID	NP_002899.1
Blocking Peptide	EBP09878
Immunogen	Peptide with sequence NDNLASNACIYN, from the internal region of the protein sequence according to NP_002899.1.
Peptide Sequence	NDNLASNACIYN
Purification Method	Purified from goat serum by ammonium sulphate precipitation followed by antigen affinity chromatography using the immunizing peptide.
Shipping Instructions	Refrigerated

Predicted Species	Human
Reactive Species	Human
Human Gene ID	5966
Product Grade	https://prod-vector-labs-pimcore-assets.s3.us-east-1.amazonaws.com/assets/products/image/elite_medium.png
IHC Results	Paraffin embedded Human Thymus. Recommended concentration: 2.5µg/ml.
ELISA	
Detection Limit	Antibody detection limit dilution 1:16000.
Western Blot	Approx 70kDa band observed in Human Spleen and Human Peripheral Blood Mononucleocytes lysates (calculated MW of 68.5kDa according to NP_002899.1). Recommended concentration: 0.5-2µg/ml. Primary incubation was 1 hour.
Application Type	Pep-ELISA, WB, IHC

DOCUMENTS

- [Data Sheet](#)

GALLERY IMAGES



250kDa
150kDa
100kDa
75kDa

50kDa

37kDa

25kDa

20kDa

15kDa