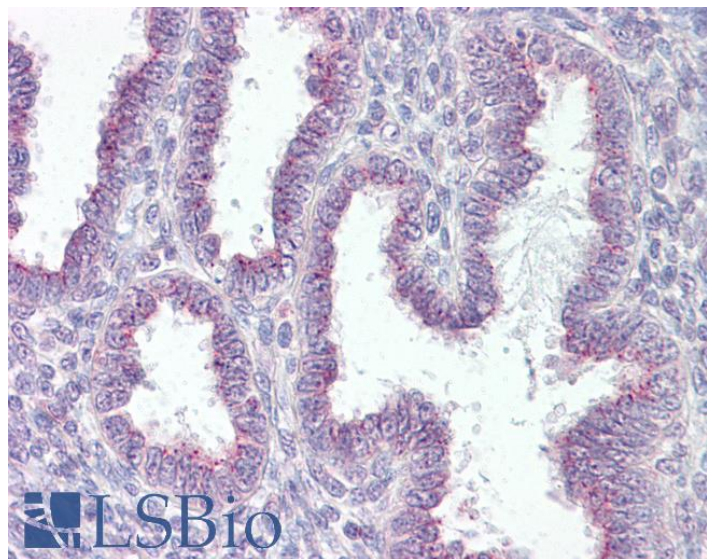


# GOAT ANTI-RER1 ANTIBODY

**SKU:** EB07861



## SPECIFICATIONS

**Formulation** Supplied at 0.5 mg/ml in Tris saline, 0.02% sodium azide, pH7.3 with 0.5% bovine serum albumin.

**Unit Size** 100 µg

**Storage Instructions** Aliquot and store at -20°C. Minimize freezing and thawing.

**Synonym / Alias Names** RER1 retention in endoplasmic reticulum 1|RER1 homolog|RP4-740C4.2|RER1 retention in endoplasmic reticulum 1 homolog (S. cerevisiae)|RER1

**Accession ID** NP\_008964.3

**Blocking Peptide** EBP07861

**Immunogen** Peptide with sequence C-HGKRRYRGKEDAGK, from the C Terminus of the protein sequence according to NP\_008964.3.

**Peptide Sequence** C-HGKRRYRGKEDAGK

**Purification Method** Purified from goat serum by ammonium sulphate precipitation followed by antigen affinity chromatography using the immunizing peptide.

**Shipping Instructions** Refrigerated

<b>Predicted Species</b>	Human
<b>Reactive Species</b>	Human
<b>Human Gene ID</b>	11079
<b>Mouse Gene ID</b>	67830
<b>Product Grade</b>	<a href="https://prod-vector-labs-pimcore-assets.s3.us-east-1.amazonaws.com/assets/products/image/elite_medium.png">https://prod-vector-labs-pimcore-assets.s3.us-east-1.amazonaws.com/assets/products/image/elite_medium.png</a>
<b>IHC Results</b>	Paraffin embedded Human Uterus. Recommended concentration: 3.75µg/ml.
<b>ELISA</b>	
<b>Detection Limit</b>	Antibody detection limit dilution 1:128000.
<b>Application Type</b>	Pep-ELISA, IHC

## SELECTED REFERENCES

[{"pmid": 0, "intro": "**This antibody has been successfully used in IHC on Human:**", "title": "A comparison of selected mRNA and protein abundances of target genes involved in Alzheimer's disease development", "author": "Kerstin TS Wirz, Pedro Haas, Koen Bossers, Dick F Swaab and Joost Verhaagen.", "journal": "Thesis 2013: Molecular changes during the development of Alzheimer's disease. Netherlands Institute for Neuroscience, [http://www.tipharma.com/fileadmin/user\\_upload/Theses/PDF/Kerstin\\_Wirz\\_T5-207.pdf#page=111](http://www.tipharma.com/fileadmin/user_upload/Theses/PDF/Kerstin_Wirz_T5-207.pdf#page=111)"}]

## DOCUMENTS

- [Data Sheet](#)

## GALLERY IMAGES

