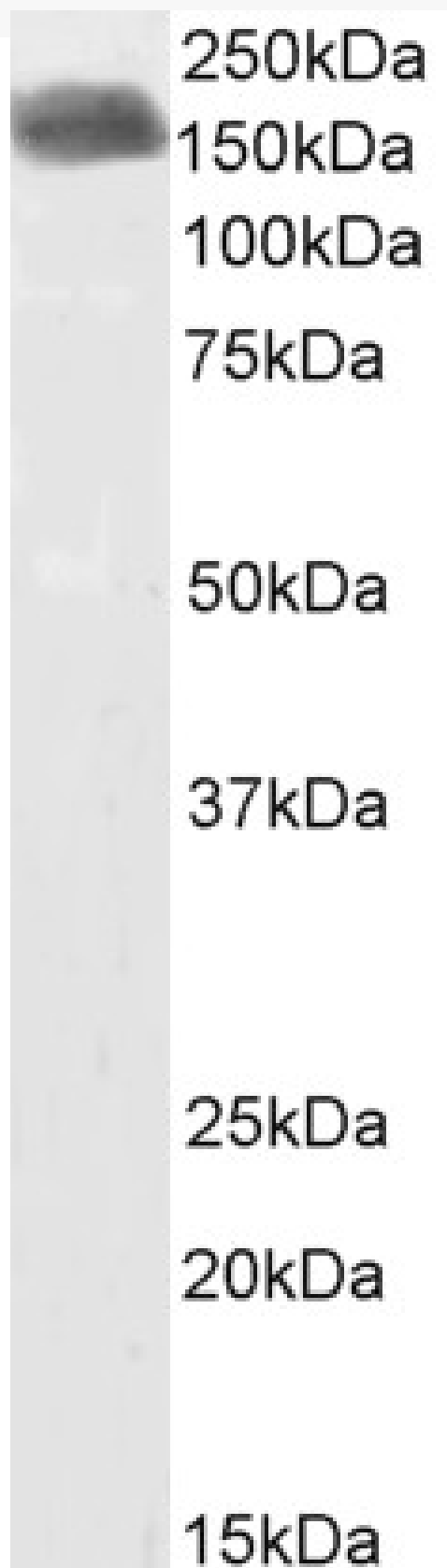


GOAT ANTI-RESTIN / CLIP1, BIOTINYLATED ANTIBODY

SKU: EB09512-B



SPECIFICATIONS

Formulation Supplied at 0.5 mg/ml in Tris saline, 0.02% sodium azide, pH7.3 with 0.5% bovine serum albumin.

Unit Size 100 µg

Storage Instructions Aliquot and store at -20°C. Minimize freezing and thawing.

Synonym / Alias Names restin (Reed-Steinberg cell-expressed intermediate filament-associated protein)|restin|cytoplasmic linker 1|Reed-Steinberg cell-expressed intermediate filament-associated protein|RSN|MGC131604|CYLN1|CLIP170|CLIP-170|CLIP|CAP-GLY domain containing linker protein 1|CLIP1

Accession ID NP_002947.1; NP_937883.1

Blocking Peptide EBP09512-B

Immunogen Peptide with sequence C-PHSTHHGSRGEERP., from the C Terminus of the protein sequence according to NP_002947.1; NP_937883.1.

Product Comments This antibody is expected to recognize both reported isoforms (NP_002947.1; NP_937883.1).

Peptide Sequence C-PHSTHHGSRGEERP.

Purification Method Purified from goat serum by ammonium sulphate precipitation followed by antigen affinity chromatography using the immunizing peptide.

Shipping Instructions Refrigerated

Predicted Species Human, Mouse, Rat, Dog, Pig

Reactive Species Human

Human Gene ID 6249

Mouse Gene ID 56430

Rat Gene ID 65201

Product Grade https://prod-vector-labs-pimcore-assets.s3.us-east-1.amazonaws.com/assets/products/image/elite_medium.png

ELISA Detection Limit Antibody detection limit dilution 1:8000.

Western Blot Approx 160kDa band observed in Human Breast Cancer lysates (calculated MW of 161kDa according to NP_002947.1. Recommended concentration: 1-3µg/ml.

Application Type Pep-ELISA, WB

DOCUMENTS

- [Data Sheet](#)

GALLERY IMAGES

