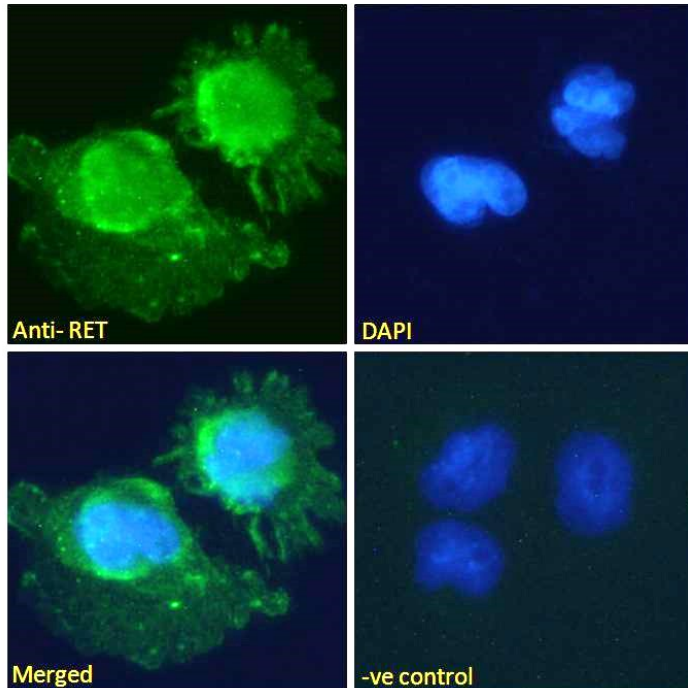




GOAT ANTI-RET ANTIBODY

SKU: EB07233



SPECIFICATIONS

Formulation	Supplied at 0.5 mg/ml in Tris saline, 0.02% sodium azide, pH7.3 with 0.5% bovine serum albumin.
Unit Size	100 µg
Storage Instructions	Aliquot and store at -20°C. Minimize freezing and thawing.
Synonym / Alias Names	ret proto-oncogene receptor tyrosine kinase proto-oncogene oncogene RET hydroxyaryl-protein kinase fusion gene cadherin family member 12 RET transforming sequence RET51 RET-ELE1 PTC MTC1 MEN2B MEN2A HSCR1 CDHF12 HGNC:9967 ret proto-oncogene (multiple endocrine neoplasia and medullary thyroid carcinoma 1, Hirschsprung disease) RET
Usage Summary	Immunofluorescence: Strong expression of the protein seen in the cytoplasm of U251 cells. Recommended concentration: 10µg/ml. Flow Cytometry: Flow cytometric analysis of Kelly cells. Recommended concentration: 10ug/ml.
Accession ID	NP_066124.1; NP_065681.1; NP_001342145.1
Blocking Peptide	EBP07233



Immunogen	Peptide with sequence NDTKALRRPKCAELH, from the internal region of the protein sequence according to NP_066124.1; NP_065681.1; NP_001342145.1.
Peptide Sequence	NDTKALRRPKCAELH
Purification Method	Purified from goat serum by ammonium sulphate precipitation followed by antigen affinity chromatography using the immunizing peptide.
Shipping Instructions	Refrigerated
Predicted Species	Human
Reactive Species	Human
Human Gene ID	5979
Product Grade	https://prod-vector-labs-pimcore-assets.s3.us-east-1.amazonaws.com/assets/products/image/elite_medium.png
IHC Results	Paraffin embedded Small Intestine. Recommended concentration: 5µg/ml.
ELISA	
Detection Limit	Antibody detection limit dilution 1:64000.
Application Type	Pep-ELISA, IF, IHC, FC

GALLERY IMAGES

