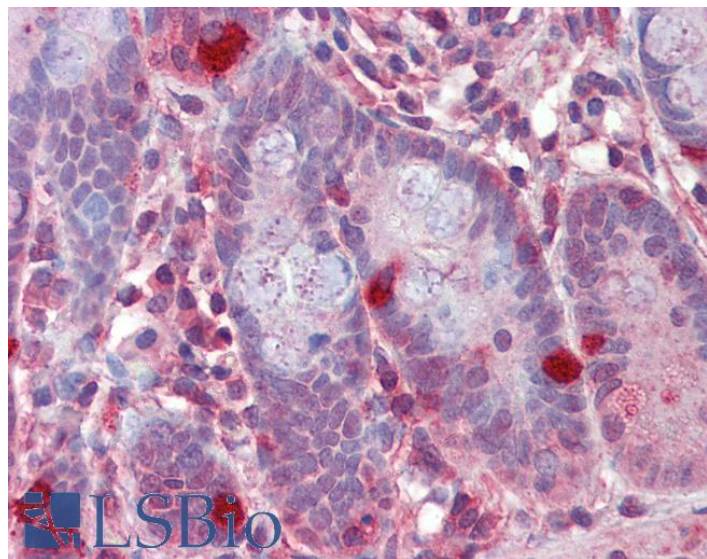


GOAT ANTI-RGS1 / 1R20 ANTIBODY

SKU: EB05421



SPECIFICATIONS

Formulation Supplied at 0.5 mg/ml in Tris saline, 0.02% sodium azide, pH7.3 with 0.5% bovine serum albumin.

Unit Size 100 µg

Storage Instructions Aliquot and store at -20°C. Minimize freezing and thawing.

Synonym / Alias Names immediate-early response 1, B-cell specific|early response protein 1R20|B-cell activation protein BL34|Regulator of G-protein signaling 1|1R20|IR20|IER1|BL34|regulator of G-protein signalling 1|1R20|RGS1

Accession ID NP_002913.3

Blocking Peptide EBP05421

Immunogen Peptide with sequence C-NLLNDLQANSLK, from the C Terminus of the protein sequence according to NP_002913.3.

Peptide Sequence C-NLLNDLQANSLK

Purification Method Purified from goat serum by ammonium sulphate precipitation followed by antigen affinity chromatography using the immunizing peptide.

Shipping Instructions Refrigerated

Predicted Species	Human, Mouse, Rat, Dog, Cow
Reactive Species	Human
Human Gene ID	5996
Mouse Gene ID	50778
Product Grade	https://prod-vector-labs-pimcore-assets.s3.us-east-1.amazonaws.com/assets/products/image/elite_medium.png
IHC Results	Paraffin embedded Human Thymus and Small Intestine. Recommended concentration: 2.5µg/ml.
ELISA	
Detection Limit	Antibody detection limit dilution 1:32000.
Western Blot	Approx 25kDa band seen in HepG2 lysate. Recommended for use at 0.5-2µg/ml.
Application Type	Pep-ELISA, WB, IHC

DOCUMENTS

- [Data Sheet](#)

GALLERY IMAGES

