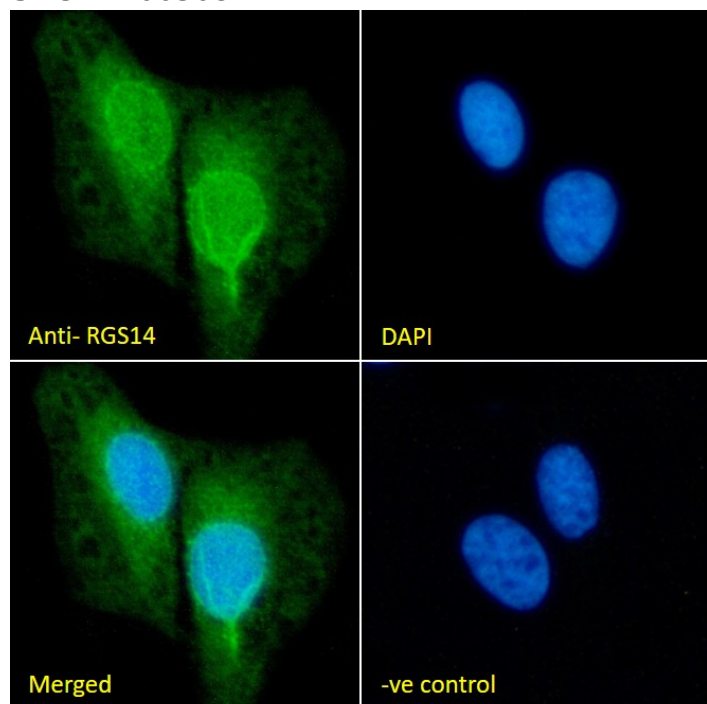


GOAT ANTI-RGS14 ANTIBODY

SKU: EB06368



SPECIFICATIONS

Formulation Supplied at 0.5 mg/ml in Tris saline, 0.02% sodium azide, pH7.3 with 0.5% bovine serum albumin.

Unit Size 100 µg

Storage Instructions Aliquot and store at -20°C. Minimize freezing and thawing.

Synonym /

Alias Names regulation of G protein signaling 14|regulator of G-protein signalling 14|RGS14

Usage Summary **Immunofluorescence:** Strong expression of the protein seen in the nuclei and cytoplasm of U2OS cells. Recommended concentration: 10µg/ml. **Flow Cytometry:** Flow cytometric analysis of U2OS cells. Recommended concentration: 10ug/ml.

Accession ID NP_006471.2; NP_001353546.1

Blocking Peptide EBP06368

Immunogen	Peptide with sequence C-IGGSLNSTTDSAL, from the C Terminus of the protein sequence according to NP_006471.2; NP_001353546.1.
Peptide Sequence	C-IGGSLNSTTDSAL
Purification Method	Purified from goat serum by ammonium sulphate precipitation followed by antigen affinity chromatography using the immunizing peptide.
Shipping Instructions	Refrigerated
Predicted Species	Human
Reactive Species	Human
Human Gene ID	10636
Product Grade	https://prod-vector-labs-pimcore-assets.s3.us-east-1.amazonaws.com/assets/products/image/elite_medium.png
ELISA Detection Limit	Antibody detection limit dilution 1:16000.
Western Blot	Preliminary testing showed a band at approx. 70kDa in Daudi and THP-1 cell lysate after 1-3ug/ml antibody staining. (calculated MW of 61.4kDa according to NP_006471.2). This molecular weight is observed by other sources. Primary incubation 1 hour at room temperature.
Application Type	Pep-ELISA, IF, FC

DOCUMENTS

- [Data Sheet](#)

GALLERY IMAGES

