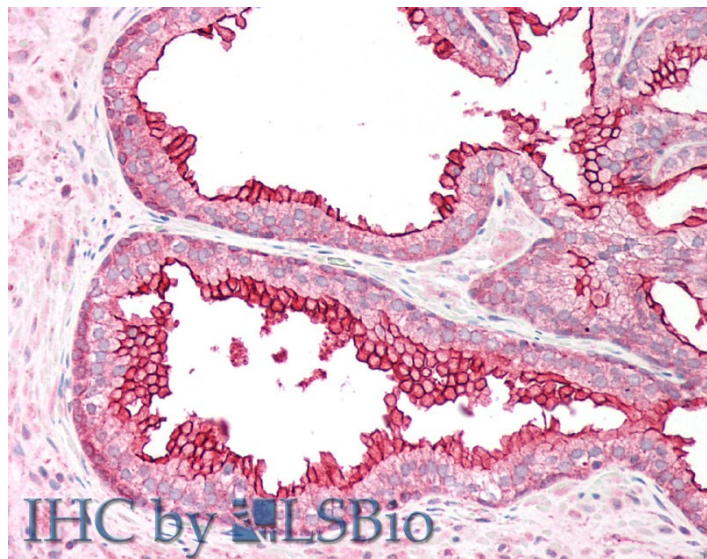


# GOAT ANTI-RGS18 ANTIBODY

**SKU:** EB06372



## SPECIFICATIONS

<b>Formulation</b>	Supplied at 0.5 mg/ml in Tris saline, 0.02% sodium azide, pH7.3 with 0.5% bovine serum albumin.
<b>Unit Size</b>	100 µg
<b>Storage Instructions</b>	Aliquot and store at -20°C. Minimize freezing and thawing.
<b>Synonym / Alias Names</b>	RGS18 RGS13 regulator of G-protein signalling 18 regulator of G-protein signaling 13 RP11-142L4.1 regulator of G-protein signalling 13
<b>Accession ID</b>	NP_570138.1
<b>Blocking Peptide</b>	EBP06372
<b>Immunogen</b>	Peptide with sequence CNEFQDVQSDVAIWL, from the C Terminus of the protein sequence according to NP_570138.1.
<b>Peptide Sequence</b>	CNEFQDVQSDVAIWL
<b>Purification Method</b>	Purified from goat serum by ammonium sulphate precipitation followed by antigen affinity chromatography using the immunizing peptide.
<b>Shipping Instructions</b>	Refrigerated

<b>Predicted Species</b>	Human
<b>Reactive Species</b>	Human
<b>Human Gene ID</b>	64407
<b>Product Grade</b>	<a href="https://prod-vector-labs-pimcore-assets.s3.us-east-1.amazonaws.com/assets/products/image/elite_medium.png">https://prod-vector-labs-pimcore-assets.s3.us-east-1.amazonaws.com/assets/products/image/elite_medium.png</a>
<b>IHC Results</b>	Paraffin embedded Human Prostate and Small Intestine. Recommended concentration: 5µg/ml.
<b>ELISA Detection Limit</b>	Antibody detection limit dilution 1:16000.
<b>Western Blot</b>	Approx 28kDa band observed in Human Peripheral Blood Mononucleocytes (lymphocytes) lysates (calculated MW of 27.6kDa according to NP_570138.1). Recommended concentration: 1-3µg/ml. Primary incubation was 1 hour.
<b>Application Type</b>	Pep-ELISA, WB, IHC

## DOCUMENTS

- [Data Sheet](#)

## GALLERY IMAGES

