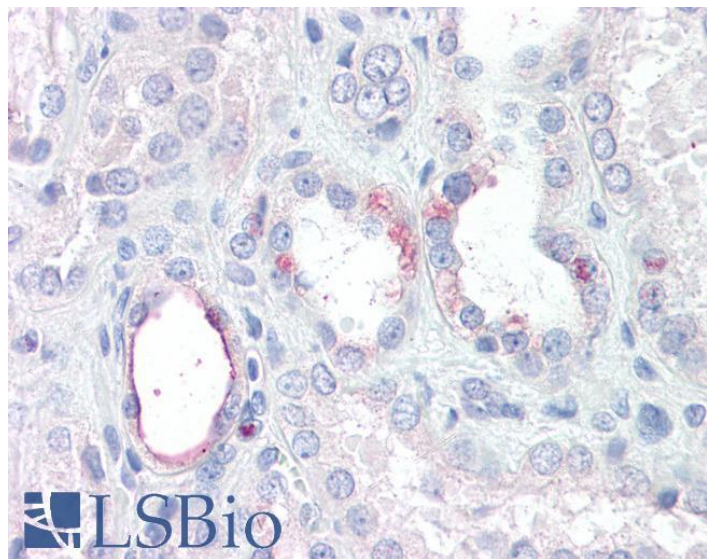


GOAT ANTI-RHBG ANTIBODY

SKU: EB10279



SPECIFICATIONS

Formulation Supplied at 0.5 mg/ml in Tris saline, 0.02% sodium azide, pH7.3 with 0.5% bovine serum albumin.

Unit Size 100 µg

Storage Instructions Aliquot and store at -20°C. Minimize freezing and thawing.

Synonym / Alias Names RHBG|SLC42A2|Rhesus blood group, B glycoprotein|Rh type B glycoprotein|Rh family, B glycoprotein (gene/pseudogene)

Accession ID NP_065140.3

Blocking Peptide EBP10279

Immunogen Peptide with sequence C-PQLEKSKHRQ, from the internal region of the protein sequence according to NP_065140.3.

Peptide Sequence C-PQLEKSKHRQ

Purification Method Purified from goat serum by ammonium sulphate precipitation followed by antigen affinity chromatography using the immunizing peptide.

Shipping Instructions Refrigerated

Predicted Species	Human, Mouse, Rat, Dog, Pig
Reactive Species	Human
Human Gene ID	57127
Mouse Gene ID	58176
Rat Gene ID	310625
Product Grade	https://prod-vector-labs-pimcore-assets.s3.us-east-1.amazonaws.com/assets/products/image/elite_medium.png
IHC Results	Paraffin embedded Human Kidney. Recommended concentration: 3.75µg/ml.
ELISA	
Detection Limit	Antibody detection limit dilution 1:2000.
Western Blot	Preliminary experiments in Human, Mouse and Rat Kidney lysates gave no specific signal but low background (at antibody concentration up to 1µg/ml).
Application Type	Pep-ELISA, IHC

DOCUMENTS

- [Data Sheet](#)

GALLERY IMAGES

