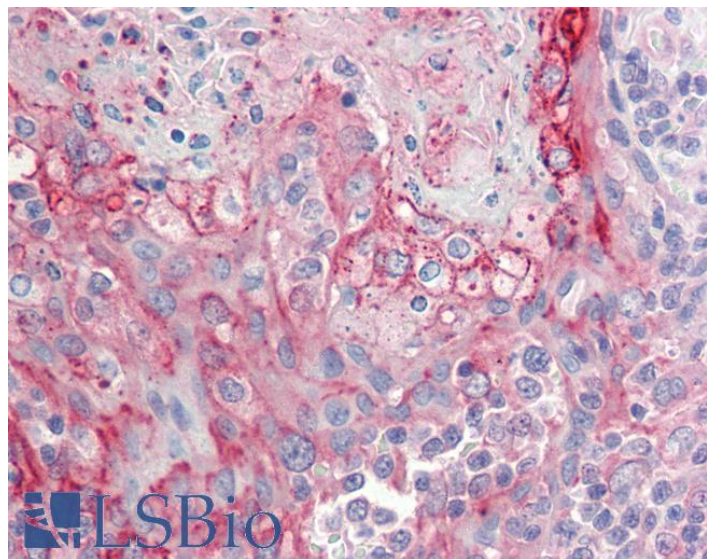


GOAT ANTI-RHCG ANTIBODY

SKU: EB10365



SPECIFICATIONS

Formulation Supplied at 0.5 mg/ml in Tris saline, 0.02% sodium azide, pH7.3 with 0.5% bovine serum albumin.

Unit Size 100 µg

Storage Instructions Aliquot and store at -20°C. Minimize freezing and thawing.

Synonym / Alias Names RHCG|SLC42A3|RHGK|Rhesus blood group, C glycoprotein|Rh type C glycoprotein|Rh family, C glycoprotein|PDRC2|C15orf6

Accession ID NP_057405.1

Blocking Peptide EBP10365

Immunogen Peptide with sequence C-ERQNSVYQSD, from the internal region of the protein sequence according to NP_057405.1.

Peptide Sequence C-ERQNSVYQSD

Purification Method Purified from goat serum by ammonium sulphate precipitation followed by antigen affinity chromatography using the immunizing peptide.

Shipping Instructions Refrigerated

Predicted Species	Human, Dog, Pig
Reactive Species	Human
Human Gene ID	51458
Product Grade	https://prod-vector-labs-pimcore-assets.s3.us-east-1.amazonaws.com/assets/products/image/elite_medium.png
IHC Results	Paraffin embedded Human Tonsil and Kidney. Recommended concentration: 5µg/ml.
ELISA	
Detection Limit	Antibody detection limit dilution 1:16000.
Western Blot	Approx 60kDa band observed in Human Testis lysates (calculated MW of 53.2kDa according to NP_057405.1). The observed molecular weight corresponds to earlier findings in literature with different antibodies (Liu et al, J Biol Chem. 2000 Aug 18;275(33):25641-51;PMID: 10852913). Recommended concentration: 1-3µg/ml. Primary incubation was 1 hour.
Application Type	Pep-ELISA, WB, IHC

DOCUMENTS

- [Data Sheet](#)

GALLERY IMAGES

