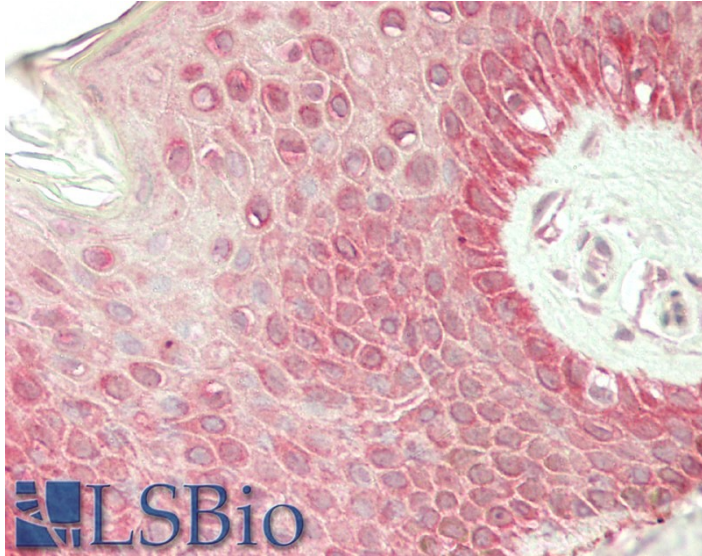


GOAT ANTI-RHCG (MOUSE) ANTIBODY

SKU: EB10366



SPECIFICATIONS

Formulation	Supplied at 0.5 mg/ml in Tris saline, 0.02% sodium azide, pH7.3 with 0.5% bovine serum albumin.
Unit Size	100 µg
Storage Instructions	Aliquot and store at -20°C. Minimize freezing and thawing.
Synonym / Alias Names	Rhcg Rhesus blood group-associated C glycoprotein BB065800 Rh type C glycoprotein ammonium transporter Rh type C rh family type C glycoprotein rhesus blood group family type C glycoprotein rhesus-associated C glycoprotein
Accession ID	NP_062773.2
Blocking Peptide	EBP10366
Immunogen	Peptide with sequence TNLRGRLPITC, from the N Terminus of the protein sequence according to NP_062773.2.
Peptide Sequence	TNLRGRLPITC
Purification Method	Purified from goat serum by ammonium sulphate precipitation followed by antigen affinity chromatography using the immunizing peptide.
Shipping Instructions	Refrigerated

Predicted Species	Mouse, Rat
Reactive Species	Human
Mouse Gene ID	56315
Rat Gene ID	293048
Product Grade	https://prod-vector-labs-pimcore-assets.s3.us-east-1.amazonaws.com/assets/products/image/elite_medium.png
IHC Results	Paraffin embedded Human Skin. Recommended concentration: 5µg/ml.
ELISA Detection Limit	Antibody detection limit dilution 1:32000.
Western Blot	Preliminary experiments gave an approx 75kDa band in Mouse Brain lysates after 0.3 µg/ml antibody staining. Please note that currently we cannot find an explanation in the literature for the band we observe given the calculated size of 55.0kDa according to NP_062773.2. The 75kDa band was successfully blocked by incubation with the immunizing peptide.
Application Type	Pep-ELISA, IHC

GALLERY IMAGES

