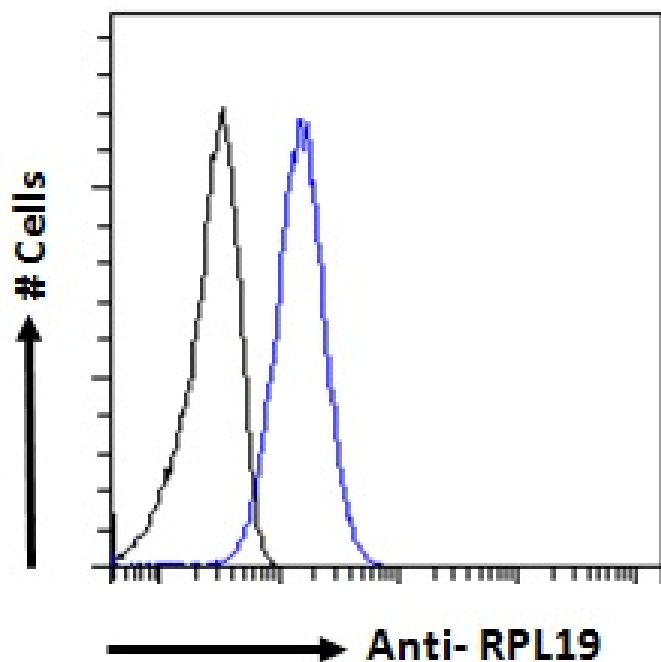


# GOAT ANTI-RIBOSOMAL PROTEIN L19 / RPL19 ANTIBODY

SKU: EB07278



## SPECIFICATIONS

<b>Unit Size</b>	100 µg
<b>Synonym / Alias Names</b>	ribosomal protein L19, cytosolic, N-terminus truncated 60S ribosomal protein L19 MGC71997 FLJ27452 DKFZp779D216 HGNC:10312 ribosomal protein L19 RPL19
<b>Usage Summary</b>	<strong>Flow Cytometry:</strong> Flow cytometric analysis of A431 cells. Recommended concentration: 10ug/ml.
<b>Accession ID</b>	NP_000972.1
<b>Blocking Peptide</b>	EBP07278
<b>Immunogen</b>	Peptide with sequence C-LRRYRESKKIDRH, from the internal region of the protein sequence according to NP_000972.1.
<b>Peptide Sequence</b>	C-LRRYRESKKIDRH

<b>Shipping Instructions</b>	Refrigerated
<b>Predicted Species</b>	Human, Mouse, Rat, Dog
<b>Reactive Species</b>	Human
<b>Human Gene ID</b>	6143
<b>Mouse Gene ID</b>	19921
<b>Rat Gene ID</b>	81767
<b>Product Grade</b>	<a href="https://prod-vector-labs-pimcore-assets.s3.us-east-1.amazonaws.com/assets/products/image/elite_medium.png">https://prod-vector-labs-pimcore-assets.s3.us-east-1.amazonaws.com/assets/products/image/elite_medium.png</a>
<b>ELISA Detection Limit</b>	Antibody detection limit dilution 1:64000.
<b>Western Blot</b>	Preliminary experiments showed bands at approx 25+55kDa in Human Colo-rectal carcinoma, Human Testes lysate and HEK293 cell lysate after 0.3-3µg/ml antibody staining (calculated MW of 23.5kDa according to NP_000972.1). Primary incubation 1 hour at room temperature.
<b>Application Type</b>	Pep-ELISA, FC

## DOCUMENTS

- [Data Sheet](#)

## GALLERY IMAGES

