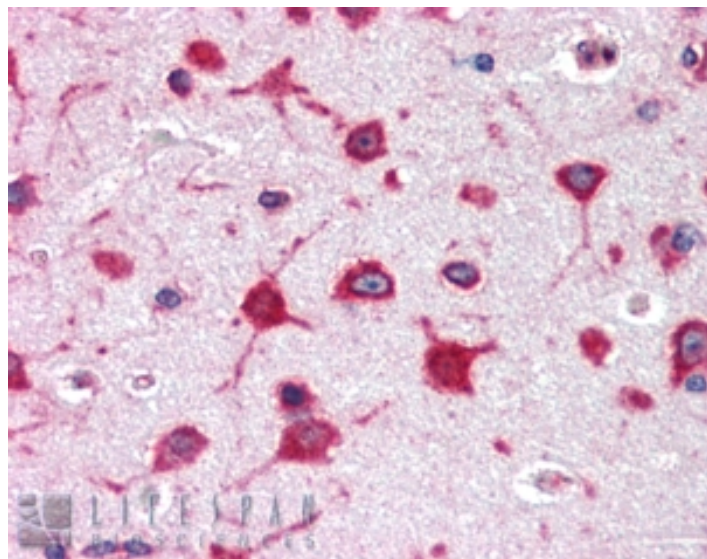


# GOAT ANTI-RIBOSOMAL PROTEIN L8 ANTIBODY

**SKU:** EB07869



## SPECIFICATIONS

**Formulation** Supplied at 0.5 mg/ml in Tris saline, 0.02% sodium azide, pH7.3 with 0.5% bovine serum albumin.

**Unit Size** 100 µg

**Storage Instructions** Aliquot and store at -20°C. Minimize freezing and thawing.

**Synonym /**

**Alias** L8|RPL8|60S ribosomal protein L8|ribosomal protein L8

**Names**

**Accession ID** NP\_000964.1

**Blocking Peptide** EBP07869

**Immunogen** Peptide with sequence KAGRAYHKYKAKRNC, from the internal region of the protein sequence according to NP\_000964.1.

**Product Comments** The reported variants represent identical protein (NP\_000964.1 and NP\_150644.1).

**Peptide Sequence** KAGRAYHKYKAKRNC

**Purification Method** Purified from goat serum by ammonium sulphate precipitation followed by antigen affinity chromatography using the immunizing peptide.

<b>Shipping Instructions</b>	Refrigerated
<b>Predicted Species</b>	Human, Mouse, Rat, Dog
<b>Reactive Species</b>	Human
<b>Human Gene ID</b>	6132
<b>Mouse Gene ID</b>	26961
<b>Rat Gene ID</b>	26962
<b>Product Grade</b>	<a href="https://prod-vector-labs-pimcore-assets.s3.us-east-1.amazonaws.com/assets/products/image/elite_medium.png">https://prod-vector-labs-pimcore-assets.s3.us-east-1.amazonaws.com/assets/products/image/elite_medium.png</a>
<b>IHC Results</b>	Paraffin embedded Human Cerebral Cortex and Spleen. Recommended concentration: 2.5µg/ml.
<b>ELISA</b>	
<b>Detection Limit</b>	Antibody detection limit dilution 1:128000.
<b>Western Blot</b>	Approx 28-30kDa band observed in lysates of cell line HepG2 (calculated MW of 28.0kDa according to NP_000964.1 and NP_150644.1). Recommended concentration: 0.01-0.03µg/ml. Primary incubation was 1 hour.
<b>Application Type</b>	Pep-ELISA, WB, IHC

## DOCUMENTS

- [Data Sheet](#)

## GALLERY IMAGES

