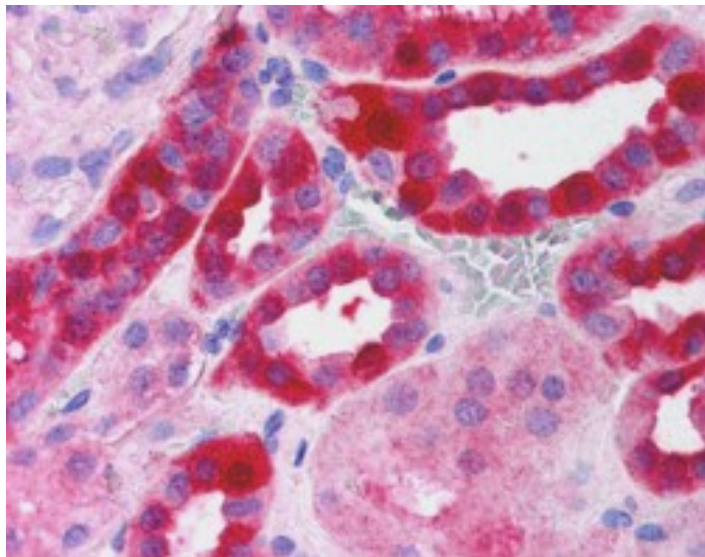


GOAT ANTI-RICTOR ANTIBODY

SKU: EB06732



SPECIFICATIONS

Formulation Supplied at 0.5 mg/ml in Tris saline, 0.02% sodium azide, pH7.3 with 0.5% bovine serum albumin.

Unit Size 100 µg

Storage Instructions Aliquot and store at -20°C. Minimize freezing and thawing.

Synonym / Alias Names TORC2-specific protein AVO3|mAVO3|PIA|RPTOR independent companion of MTOR, complex 2|RICTOR|DKFZp686B11164|pianissimo|mAVO3|rapamycin-insensitive companion of mTOR|likely ortholog of mouse TORC2-specific protein AVO3 (S. cerevisiae)|MGC39830|AVO3|KIAA1999|Rictor

Accession ID NP_689969.2

Blocking Peptide EBP06732

Immunogen Peptide with sequence C-KQPIVD TSAES, from the C Terminus of the protein sequence according to NP_689969.2.

Peptide Sequence C-KQPIVD TSAES

Purification Method Purified from goat serum by ammonium sulphate precipitation followed by antigen affinity chromatography using the immunizing peptide.

Shipping Instructions Refrigerated

Predicted Species	Human, Mouse, Dog
Reactive Species	Human
Human Gene ID	253260
Mouse Gene ID	78757
Product Grade	https://prod-vector-labs-pimcore-assets.s3.us-east-1.amazonaws.com/assets/products/image/elite_medium.png
IHC Results	In paraffin embedded Kidney shows strong cytoplasmic staining of epithelial cells in distal convoluted tubules. Recommended concentration, 2-3µg/ml.
ELISA	
Detection Limit	Antibody detection limit dilution 1:4000.
Western Blot	Preliminary experiments gave an approx 38kDa band in Human Lung Carcinoma A549 cell line and cervix epitheloid carcinoma cell line HeLa lysates after 0.1µg/ml antibody staining. Please note that currently we cannot find an explanation in the literature for the band we observe given the calculated size of 192kDa according to NP_689969.2. The 38kDa band was successfully blocked by incubation with the immunizing peptide. We would appreciate any feedback from people in the field - have any results been reported with other antibodies/lysates? Have any further splice variants/modified forms been reported?
Application Type	Pep-ELISA, IHC

DOCUMENTS

- [Data Sheet](#)

GALLERY IMAGES

