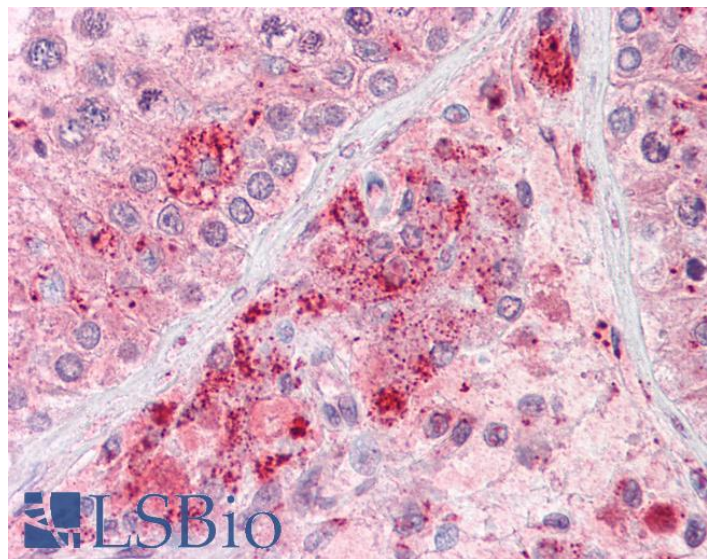


GOAT ANTI-RIF1 (AA 2076-2089) ANTIBODY

SKU: EB06542



SPECIFICATIONS

Formulation Supplied at 0.5 mg/ml in Tris saline, 0.02% sodium azide, pH7.3 with 0.5% bovine serum albumin.

Unit Size 100 µg

Storage Instructions Aliquot and store at -20°C. Minimize freezing and thawing.

Synonym /

Alias Rif1|telomere-associated protein RIF1 homolog|Rap1 interacting factor 1

Names

Accession ID NP_060621.3

Blocking Peptide EBP06542

Immunogen Peptide with sequence CEEGIIDANKTETNT, from the internal region of the protein sequence according to NP_060621.3.

Product Comments This antibody is expected to recognise an epitope corresponding to aa 2076-2089 of human RIF1 protein.

Peptide Sequence CEEGIIDANKTETNT

Purification Method Purified from goat serum by ammonium sulphate precipitation followed by antigen affinity chromatography using the immunizing peptide.

Shipping Instructions	Refrigerated
Predicted Species	Human
Reactive Species	Human
Human Gene ID	55183
Product Grade	https://prod-vector-labs-pimcore-assets.s3.us-east-1.amazonaws.com/assets/products/image/elite_medium.png
IHC Results	Paraffin embedded Human Testis and Brain (Cortex). Recommended concentration: 1-2µg/ml.
ELISA	
Detection Limit	Antibody detection limit dilution 1:16000.
Western Blot	Not yet tested - our routinely used western blotting protocol does not allow detection of proteins as large as the predicted size of approx. 247kDa according to NP_060621. Therefore we cannot recommend an optimal concentration.
Application Type	Pep-ELISA, IHC

DOCUMENTS

- [Data Sheet](#)

GALLERY IMAGES

