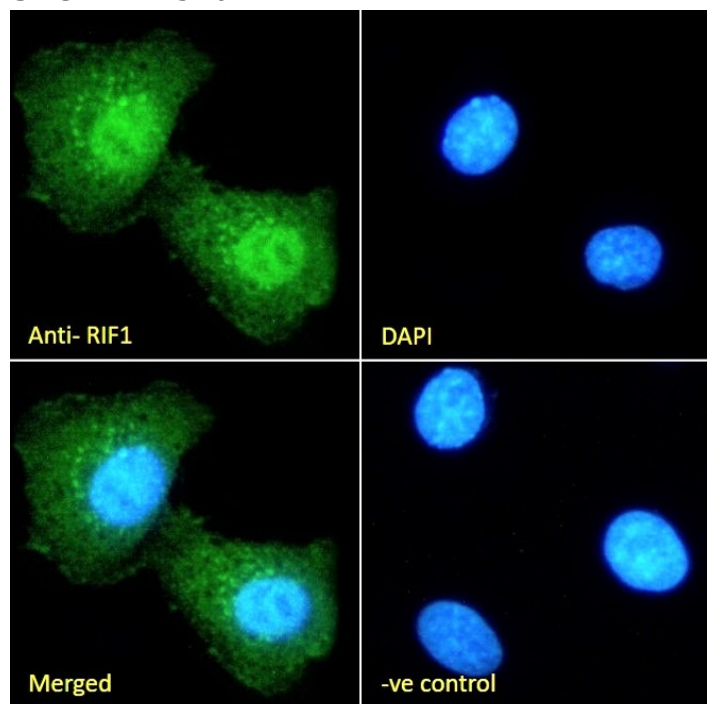


# GOAT ANTI-RIF1 ANTIBODY

SKU: EB11540



## SPECIFICATIONS

<b>Formulation</b>	Supplied at 0.5 mg/ml in Tris saline, 0.02% sodium azide, pH7.3 with 0.5% bovine serum albumin.
<b>Unit Size</b>	100 µg
<b>Storage</b>	Aliquot and store at -20°C. Minimize freezing and thawing.
<b>Instructions</b>	
<b>Synonym / Alias</b>	telomere-associated protein RIF1 RIF1 rap1-interacting factor 1 homolog RAP1 interacting factor homolog
<b>Names</b>	(yeast) OTTHUMP00000207210 OTTHUMP00000207208 OTTHUMP00000207207 OTTHUMP00000207206 OTTHUMP00000162712 FLJ12870 DKFZp781N1478 DKFZp434D1026
<b>Usage Summary</b>	<strong>Immunofluorescence:</strong> Expression of the protein seen in the nucleus of NIH3T3, HEK293 and U2OS cells. Recommended concentration: 10µg/ml.
<b>Accession ID</b>	NP_060621.3; NP_001171134.1
<b>Blocking Peptide</b>	EBP11540
<b>Immunogen</b>	Peptide with sequence C-RNLQSRWRSPSHEN, from the C Terminus of the protein sequence according to NP_060621.3; NP_001171134.1.
<b>Product</b>	This antibody is expected to recognize both reported isoforms (NP_060621.3; NP_001171134.1). The immunizing peptide sequence has been optimised for cross-reactivity in mouse. Reported variants represent identical protein: NP_001171135.1, NP_001171136.1, NP_001171134.1
<b>Comments</b>	
<b>Peptide Sequence</b>	C-RNLQSRWRSPSHEN
<b>Purification Method</b>	Purified from goat serum by ammonium sulphate precipitation followed by antigen affinity chromatography using the immunizing peptide.
<b>Shipping Instructions</b>	Refrigerated

<b>Predicted Species</b>	Human, Mouse, Dog, Pig, Cow
<b>Reactive Species</b>	Human, Mouse
<b>Human Gene ID</b>	55183
<b>Mouse Gene ID</b>	51869
<b>Product Grade</b>	<a href="https://prod-vector-labs-pimcore-assets.s3.us-east-1.amazonaws.com/assets/products/image/elite_medium.png">https://prod-vector-labs-pimcore-assets.s3.us-east-1.amazonaws.com/assets/products/image/elite_medium.png</a>
<b>ELISA Detection Limit</b>	Antibody detection limit dilution 1:128000.
<b>Application Type</b>	Pep-ELISA, IF

## DOCUMENTS

- [Data Sheet](#)

## GALLERY IMAGES

