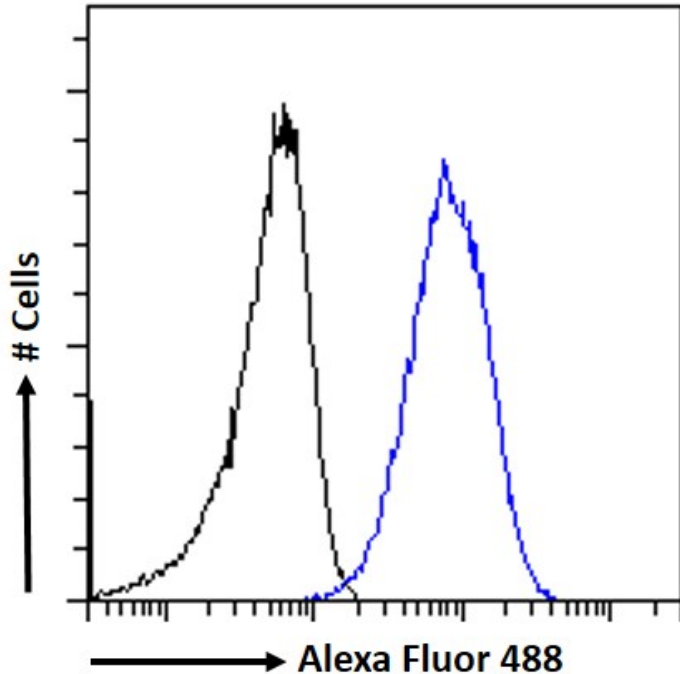


# GOAT ANTI-RNF13 / RZF (ISOFORM 1 AND 3) ANTIBODY

SKU: EB05854



## SPECIFICATIONS

**Formulation** Supplied at 0.5 mg/ml in Tris saline, 0.02% sodium azide, pH7.3 with 0.5% bovine serum albumin.

**Unit Size** 100 µg

**Storage Instructions** Aliquot and store at -20°C. Minimize freezing and thawing.

**Synonym /**

**Alias** FLJ93817|MGC13689|RING zinc finger protein|RZF|ring finger protein 13|RNF13

**Names**

**Usage Summary** <strong>Flow Cytometry:</strong> Flow cytometric analysis of A431 cells. Recommended concentration: 10ug/ml.

**Accession ID** NP\_009213.1; NP\_001365216.1; NP\_001365220.1

**Blocking Peptide** EBP05854

**Immunogen** Peptide with sequence C-PNGERDYNIANTV, from the C Terminus of the protein sequence according to NP\_009213.1; NP\_001365216.1; NP\_001365220.1.

<b>Product Comments</b>	Reported variants represent identical protein (NP_009213.1; NP_899237.1).
<b>Peptide Sequence</b>	C-PNGERDYNIAITV
<b>Purification Method</b>	Purified from goat serum by ammonium sulphate precipitation followed by antigen affinity chromatography using the immunizing peptide.
<b>Shipping Instructions</b>	Refrigerated
<b>Predicted Species</b>	Human, Mouse, Rat, Dog, Pig, Cow
<b>Reactive Species</b>	Human
<b>Human Gene ID</b>	11342
<b>Product Grade</b>	<a href="https://prod-vector-labs-pimcore-assets.s3.us-east-1.amazonaws.com/assets/products/image/elite_plus_medium.png">https://prod-vector-labs-pimcore-assets.s3.us-east-1.amazonaws.com/assets/products/image/elite_plus_medium.png</a>
<b>IHC Results</b>	Paraffin embedded Human Kidney. Recommended concentration: 5µg/ml.
<b>ELISA Detection Limit</b>	Antibody detection limit dilution 1:1000.
<b>Western Blot</b>	Approx. 42kDa band observed in lysates of cell line A431 and in preliminary testing of Human Lung lysate, and approx. 45kDa in lysates of cell line HeLa and in preliminary testing of U251 cell lysate (calculated MW of 42.8kDa according to NP_009213.1). Recommended concentration: 1-3ug/ml. Primary incubation 1 hour at room temperature.
<b>Application Type</b>	Pep-ELISA, WB, IHC, FC

## DOCUMENTS

- [Data Sheet](#)

## GALLERY IMAGES

