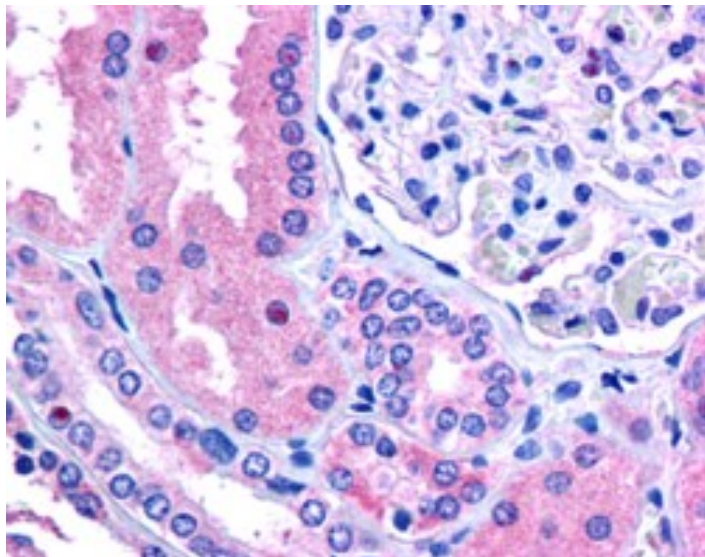


GOAT ANTI-RNF213 / C17ORF27 (C TERMINUS) ANTIBODY

SKU: EB07611



SPECIFICATIONS

Formulation Supplied at 0.5 mg/ml in Tris saline, 0.02% sodium azide, pH7.3 with 0.5% bovine serum albumin.

Unit Size 100 µg

Storage Instructions Aliquot and store at -20°C. Minimize freezing and thawing.

Synonym /

Alias Names RNF213|C17orf27|ring finger protein 213|chromosome 17 open reading frame 27|KIAA1554

Accession ID NP_065965.4

Blocking Peptide EBP07611

Immunogen Peptide with sequence C-KTAAVLKWNRE, from the C Terminus of the protein sequence according to NP_065965.4.

Peptide Sequence C-KTAAVLKWNRE

Purification Method Purified from goat serum by ammonium sulphate precipitation followed by antigen affinity chromatography using the immunizing peptide.

Shipping Instructions	Refrigerated
Predicted Species	Human
Reactive Species	Human
Human Gene ID	57674
Product Grade	https://prod-vector-labs-pimcore-assets.s3.us-east-1.amazonaws.com/assets/products/image/elite_medium.png
IHC Results	In paraffin embedded human kidney shows rare staining of nucleoli across the kidney . Recommended concentration, 2.5µg/ml.
ELISA	
Detection Limit	Antibody detection limit dilution 1:4000.
Western Blot	Not yet tested - our routinely used western blotting protocol does not allow detection of proteins as large as the calculated size of 374kDa according to NP_065965.3. Therefore we cannot recommend an optimal concentration and the product is investigative grade. We would appreciate any feedback from people in the field - have any results been reported with other antibodies/lysates? Have any further splice variants/modified forms been reported?
Application Type	Pep-ELISA, IHC

DOCUMENTS

- [Data Sheet](#)

GALLERY IMAGES

