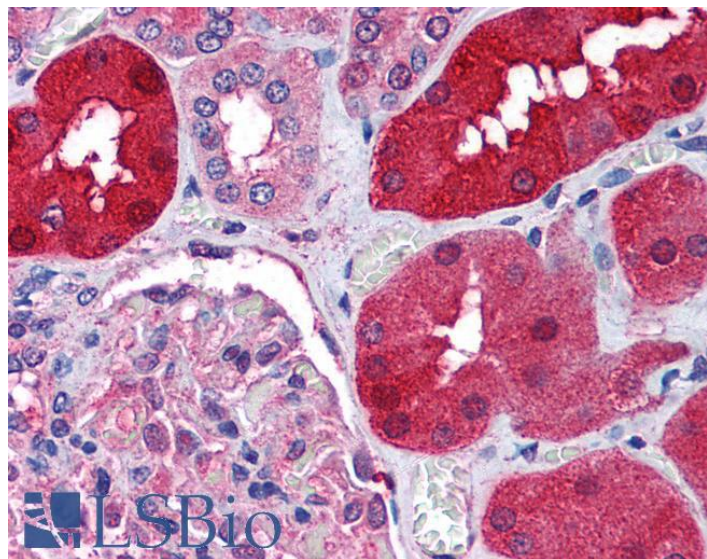


GOAT ANTI-RNF213 / C17ORF27 (INTERNAL) ANTIBODY

SKU: EB07610



SPECIFICATIONS

Formulation Supplied at 0.5 mg/ml in Tris saline, 0.02% sodium azide, pH7.3 with 0.5% bovine serum albumin.

Unit Size 100 µg

Storage Instructions Aliquot and store at -20°C. Minimize freezing and thawing.

Synonym /

Alias ring finger protein 213|RNF213|C17orf27|chromosome 17 open reading frame 27|KIAA1554

Names

Accession ID NP_065965.3

Blocking Peptide EBP07610

Immunogen Peptide with sequence C-KNPQTQTEERFRPQ, from the internal region of the protein sequence according to NP_065965.3.

Peptide Sequence C-KNPQTQTEERFRPQ

Purification Method Purified from goat serum by ammonium sulphate precipitation followed by antigen affinity chromatography using the immunizing peptide.

Shipping Instructions Refrigerated

Predicted Species	Human
Reactive Species	Human
Human Gene ID	57674
Product Grade	https://prod-vector-labs-pimcore-assets.s3.us-east-1.amazonaws.com/assets/products/image/elite_medium.png
IHC Results	Paraffin embedded Human Kidney. Recommended concentration: 1.25µg/ml.
ELISA Detection Limit	Antibody detection limit dilution 1:128000.
Western Blot	Not yet tested - our routinely used western blotting protocol does not allow detection of proteins as large as the calculated size of 374kDa according to NP_065965.3. Therefore we cannot recommend an optimal concentration.
Application Type	Pep-ELISA, IHC

DOCUMENTS

- [Data Sheet](#)

GALLERY IMAGES

