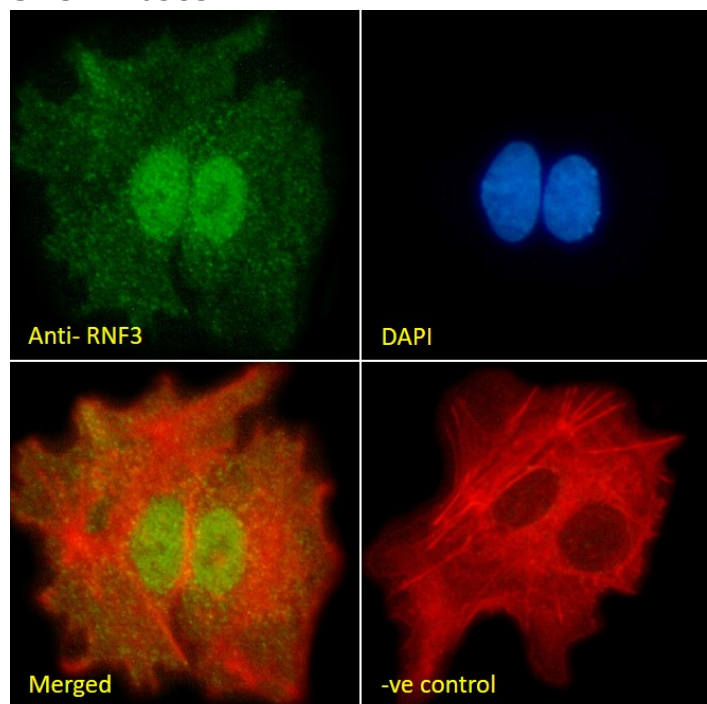


# GOAT ANTI-RNF3 (247 AA ISOFORM) ANTIBODY

SKU: EB05837



## SPECIFICATIONS

**Formulation** Supplied at 0.5 mg/ml in Tris saline, 0.02% sodium azide, pH7.3 with 0.5% bovine serum albumin.

**Unit Size** 100 µg

**Storage Instructions** Aliquot and store at -20°C. Minimize freezing and thawing.

**Synonym / Alias Names** MGC129615|FLJ43813|FLJ36550|DKFZp686D20235|polycomb group ring finger 3|PCGF3|ring finger protein 3|MGC40413|RNF3A|DONG1|RNF3

**Usage Summary** **Immunofluorescence:** Strong expression of the protein seen in the nuclei of HepG2 cells. Recommended concentration: 10µg/ml. **Flow Cytometry:** Flow cytometric analysis of HepG2 cells. Recommended concentration: 10ug/ml.

**Accession ID** NP\_006306.2; NP\_001382179.1

**Blocking Peptide** EBP05837

|                              |   |
|------------------------------|---|
| <b>Immunogen</b>             | Peptide with sequence C-PLLLHYRPKMDLL, from the C Terminus of the protein sequence according to NP_006306.2; NP_001382179.1.  |
| <b>Product Comments</b>      | This antibody is expected to recognise tisoforms NP_001382179.1 and NP_006306.2, not the 132 aa isoform (NP_694982).  |
| <b>Peptide Sequence</b>      | C-PLLLHYRPKMDLL   |
| <b>Purification Method</b>   | Purified from goat serum by ammonium sulphate precipitation followed by antigen affinity chromatography using the immunizing peptide.   |
| <b>Shipping Instructions</b> | Refrigerated  |
| <b>Predicted Species</b>     | Human, Rat, Cow   |
| <b>Reactive Species</b>      | Human   |
| <b>Human Gene ID</b>         | 10336   |
| <b>Mouse Gene ID</b>         | 69587   |
| <b>Product Grade</b>         | <a href="https://prod-vector-labs-pimcore-assets.s3.us-east-1.amazonaws.com/assets/products/image/elite_medium.png">https://prod-vector-labs-pimcore-assets.s3.us-east-1.amazonaws.com/assets/products/image/elite_medium.png</a> |
| <b>ELISA Detection Limit</b> | Antibody detection limit dilution 1:2000.   |
| <b>Application Type</b>      | Pep-ELISA, IF, FC   |

## DOCUMENTS

- [Data Sheet](#)

## GALLERY IMAGES

