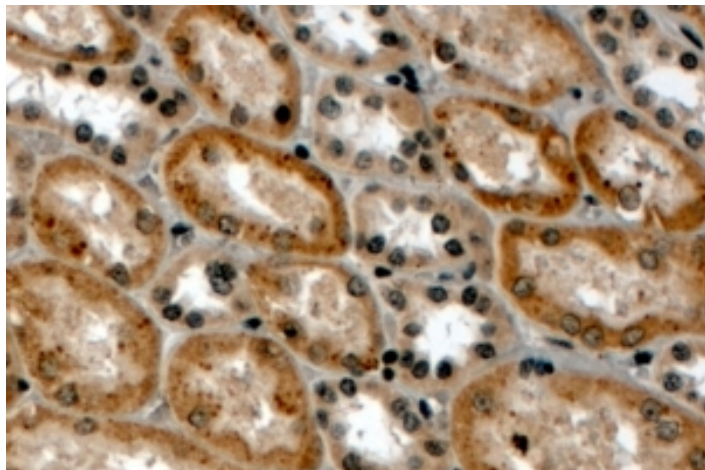


GOAT ANTI-RNF34 / RFI (N TERMINUS) ANTIBODY

SKU: EB05889



SPECIFICATIONS

Formulation Supplied at 0.5 mg/ml in Tris saline, 0.02% sodium azide, pH7.3 with 0.5% bovine serum albumin.

Unit Size 100 µg

Storage Instructions Aliquot and store at -20°C. Minimize freezing and thawing.

Synonym / Alias Names caspases-8 and -10-associated RING finger protein 1|FLJ21786|CARP1|hRFI|FYVE-RING finger protein MOMO|RING finger protein RIFF|FLJ21786|RIFF|RIF|RFI|ring finger protein 34|RNF34

Accession ID NP_919247.1; NP_079402.2

Blocking Peptide EBP05889

Immunogen Peptide with sequence KAGATSMWASCC, from the N Terminus of the protein sequence according to NP_919247.1; NP_079402.2.

Product Comments This antibody is expected to recognize both reported isoforms (NP_919247.1 and NP_079402.2).

Peptide Sequence KAGATSMWASCC

Purification Method Purified from goat serum by ammonium sulphate precipitation followed by antigen affinity chromatography using the immunizing peptide.

Shipping Instructions Refrigerated

Predicted Species	Human, Mouse, Rat, Dog, Cow
Reactive Species	Human
Human Gene ID	80196
Mouse Gene ID	80751
Rat Gene ID	282845
Product Grade	https://prod-vector-labs-pimcore-assets.s3.us-east-1.amazonaws.com/assets/products/image/elite_medium.png
IHC Results	In paraffin embedded Human Kidney shows cytoplasm staining in select DCT. Recommended concentration, 4-8µg/ml.
ELISA Detection Limit	Antibody detection limit dilution 1:32000.
Application Type	Pep-ELISA, IHC

DOCUMENTS

- [Data Sheet](#)

GALLERY IMAGES

