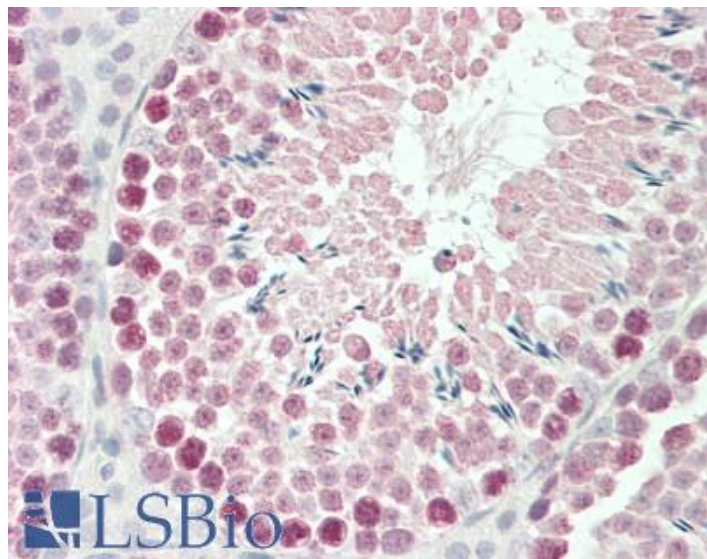


# GOAT ANTI-ROBO1 / DUTT1 (MOUSE) ANTIBODY

**SKU:** EB07464



## SPECIFICATIONS

**Formulation** Supplied at 0.5 mg/ml in Tris saline, 0.02% sodium azide, pH7.3 with 0.5% bovine serum albumin.

**Unit Size** 100 µg

**Storage Instructions** Aliquot and store at -20°C. Minimize freezing and thawing.

**Synonym /**

**Alias Names** roundabout homolog 1|DUTT1|AW742721|AW494633|roundabout homolog 1 (Drosophila)|Robo1

**Accession ID** NP\_062286.2

**Blocking Peptide** EBP07464

**Immunogen** Peptide with sequence C-QKARPAKKQKHQ, from the internal region of the protein sequence according to NP\_062286.2.

**Peptide Sequence** C-QKARPAKKQKHQ

**Purification Method** Purified from goat serum by ammonium sulphate precipitation followed by antigen affinity chromatography using the immunizing peptide.

**Shipping Instructions** Refrigerated

<b>Predicted Species</b>	Mouse, Rat, Dog
<b>Reactive Species</b>	Mouse
<b>Mouse Gene ID</b>	19876
<b>Rat Gene ID</b>	58946
<b>Product Grade</b>	<a href="https://prod-vector-labs-pimcore-assets.s3.us-east-1.amazonaws.com/assets/products/image/elite_medium.png">https://prod-vector-labs-pimcore-assets.s3.us-east-1.amazonaws.com/assets/products/image/elite_medium.png</a>
<b>IHC Results</b>	Paraffin embedded Mouse Testis. Recommended concentration: 5µg/ml.
<b>ELISA Detection Limit</b>	Antibody detection limit dilution 1:128000.
<b>Western Blot</b>	Approx 200kDa band observed in fetal Mouse Brain lysates (calculated MW of 176kDa according to NP_062286.2). Recommended concentration: 0.05-0.2µg/ml. Primary incubation was 1 hour.
<b>Application Type</b>	Pep-ELISA, WB, IHC

## DOCUMENTS

- [Data Sheet](#)

## GALLERY IMAGES

