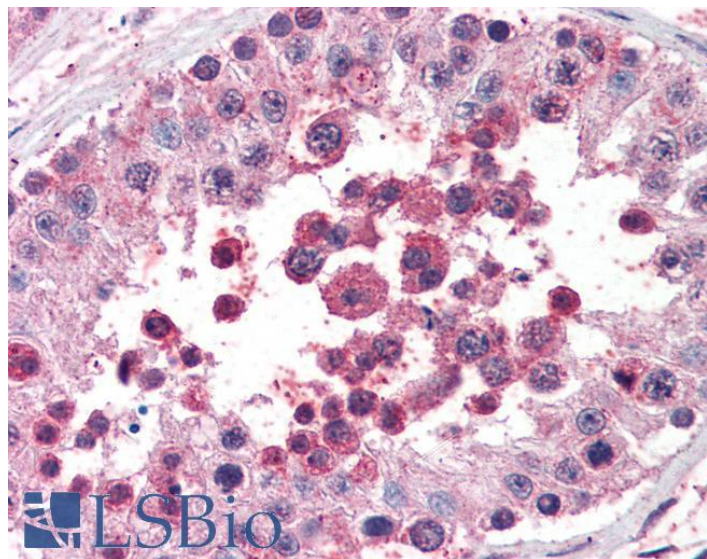


GOAT ANTI-ROBO2 ANTIBODY

SKU: EB08226



SPECIFICATIONS

Unit Size	100 µg
Synonym / Alias Names	roundabout, axon guidance receptor, homolog 2 SAX3 KIAA1568 roundabout, axon guidance receptor, homolog 2 (Drosophila) ROBO2
Accession ID	NP_002933.1
Blocking Peptide	EBP08226
Immunogen	Peptide with sequence C-NQSQRPRPTKKHK, from the internal region (near the C Terminus) of the protein sequence according to NP_002933.1.
Peptide Sequence	C-NQSQRPRPTKKHK
Shipping Instructions	Refrigerated
Predicted Species	Human, Mouse, Rat, Dog
Reactive Species	Human

Human Gene ID	6092
Mouse Gene ID	268902
Rat Gene ID	84409
Product Grade	https://prod-vector-labs-pimcore-assets.s3.us-east-1.amazonaws.com/assets/products/image/elite_medium.png
IHC Results	Paraffin embedded Human Testis. Recommended concentration: 5µg/ml.
ELISA	
Detection Limit	Antibody detection limit dilution 1:16000.
Western Blot	Preliminary experiments gave an approx. 75kDa band in Human Brain (Amygdala) lysates after 0.3µg/ml antibody staining. Please note that currently we cannot find an explanation in the literature for the band we observe given the calculated size of 151kDa according to NP_002933.1. The 75kDa band was successfully blocked by incubation with the immunizing peptide.
Application Type	Pep-ELISA, IHC

DOCUMENTS

- [Data Sheet](#)

GALLERY IMAGES

