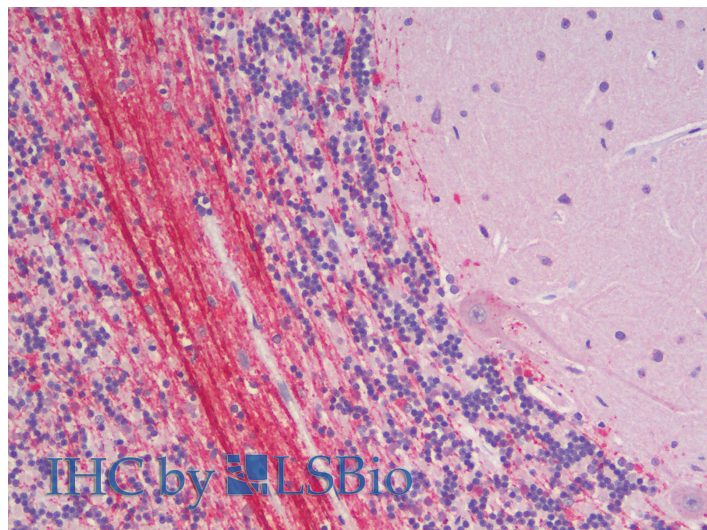


# GOAT ANTI-ROBO3.2 (MOUSE AA1303-1316) ANTIBODY

**SKU:** EB11776



## SPECIFICATIONS

**Formulation** Supplied at 0.5 mg/ml in Tris saline, 0.02% sodium azide, pH7.3 with 0.5% bovine serum albumin.

**Unit Size** 100 µg

**Storage Instructions** Aliquot and store at -20°C. Minimize freezing and thawing.

**Synonym / Alias Names** roundabout homolog 3 (Drosophila)|roundabout homolog 3|Robo3b|Robo3a|Robo3|Rig-1|Rig1|retinoblastoma-inhibiting gene 1 protein|retinoblastoma inhibiting gene 1|Rbig1

**Accession ID** AAD11628.1

**Blocking Peptide** EBP11776

**Immunogen** Peptide with sequence KESQGRGRGLEACR, from the C-terminus of the protein sequence according to AAD11628.1.

**Peptide Sequence** KESQGRGRGLEACR

**Purification Method** Purified from goat serum by ammonium sulphate precipitation followed by antigen affinity chromatography using the immunizing peptide.

**Shipping Instructions** Refrigerated

<b>Predicted Species</b>	Human, Mouse, Rat, Dog, Pig, Cow
<b>Reactive Species</b>	Human
<b>Mouse Gene ID</b>	19649
<b>Product Grade</b>	<a href="https://prod-vector-labs-pimcore-assets.s3.us-east-1.amazonaws.com/assets/products/image/elite_medium.png">https://prod-vector-labs-pimcore-assets.s3.us-east-1.amazonaws.com/assets/products/image/elite_medium.png</a>
<b>IHC Results</b>	Paraffin embedded Human Brain (Cerebellum). Recommended concentration: 5µg/ml.
<b>ELISA Detection Limit</b>	Antibody detection limit dilution 1:128000.
<b>Western Blot</b>	Preliminary experiments gave bands at approx 85kDa in Mouse fetal Brain lysates after 1µg/ml antibody staining. Please note that currently we cannot find an explanation in the literature for the bands we observe given the calculated size of 150kDa according to Mouse AAD11628.1. Both detected bands were successfully blocked by incubation with the immunizing peptide (and BLAST results with the immunizing peptide sequence did not identify any other proteins to explain the additional bands).
<b>Application Type</b>	Pep-ELISA, IHC

## DOCUMENTS

- [Data Sheet](#)

## GALLERY IMAGES

