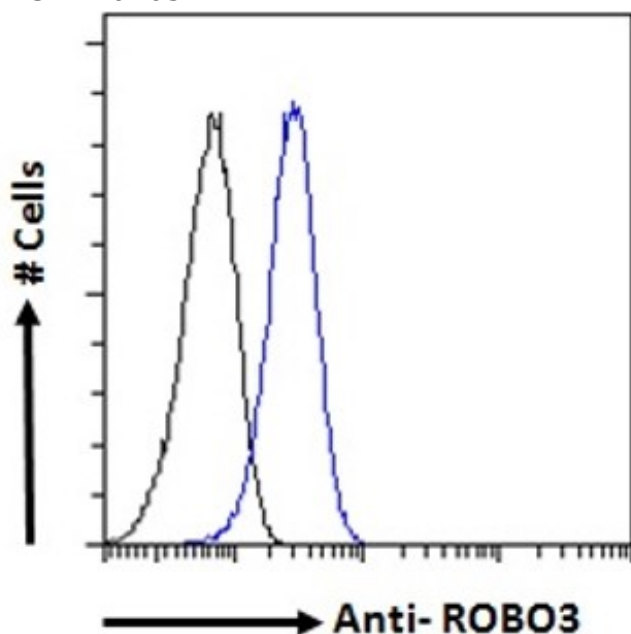


GOAT ANTI-ROBO3 (INTERNAL) ANTIBODY

SKU: EB07057



SPECIFICATIONS

Formulation Supplied at 0.5 mg/ml in Tris saline, 0.02% sodium azide, pH7.3 with 0.5% bovine serum albumin.

Unit Size 100 µg

Storage Instructions Aliquot and store at -20°C. Minimize freezing and thawing.

Synonym / roundabout, axon guidance receptor, homolog 3|retinoblastoma inhibiting gene

Alias 1|RIG1|RBIG1|HGPPS|FLJ21044|HGNC:13433|roundabout, axon guidance receptor, homolog 3

Names (Drosophila)|ROBO3

Usage Summary **Flow Cytometry:** Flow cytometric analysis of U2OS cells. Recommended concentration: 10ug/ml. This antibody was successfully used on rheumatoid arthritis synovial fibroblasts (RASf): Denk et al (2010) PMID: 20298552.

Accession ID NP_071765.2

Blocking Peptide EBP07057

Immunogen Peptide with sequence C-RKDGARLKEEEGR, from the internal region of the protein sequence according to NP_071765.2.

Peptide Sequence	C-RKDGARLKEEEGR
Purification Method	Purified from goat serum by ammonium sulphate precipitation followed by antigen affinity chromatography using the immunizing peptide.
Shipping Instructions	Refrigerated
Predicted Species	Human, Dog
Reactive Species	Human
Human Gene ID	64221
Product Grade	https://prod-vector-labs-pimcore-assets.s3.us-east-1.amazonaws.com/assets/products/image/elite_medium.png
ELISA Detection Limit	Antibody detection limit dilution 1:64000.
Application Type	Pep-ELISA, FC

SELECTED REFERENCES

[{"pmid": 20298552, "intro": "**This antibody has been successfully used in FC on Human:**", "title": "Slit3 inhibits Robo3-induced invasion of synovial fibroblasts in rheumatoid arthritis.", "author": "Denk AE, Kaufmann S, Stark K, Schedel J, Lowin T, Schubert T, Bosserhoff AK.", "journal": "Arthritis Res Ther. 2010;12(2):R45."}]

DOCUMENTS

- [Data Sheet](#)

GALLERY IMAGES

