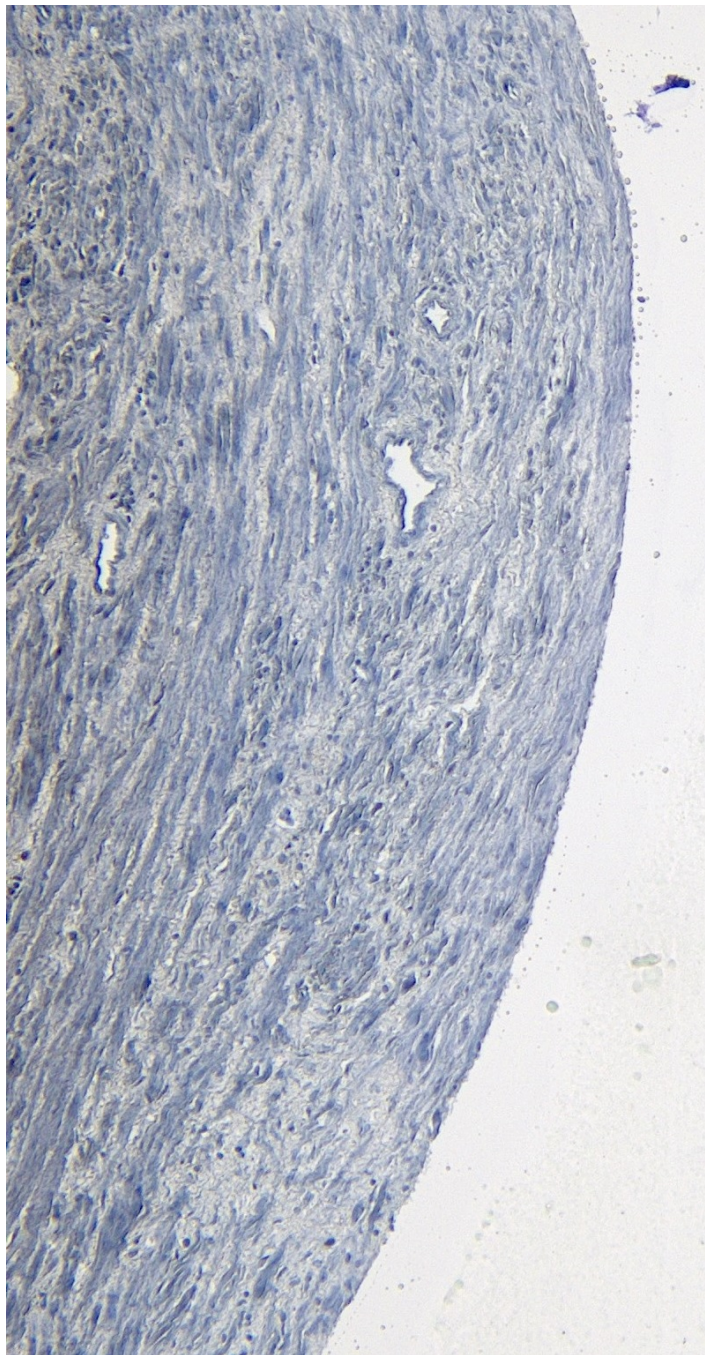


GOAT ANTI-ROR1 ANTIBODY

SKU: EB09144



SPECIFICATIONS

Formulation	Supplied at 0.5 mg/ml in Tris saline, 0.02% sodium azide, pH7.3 with 0.5% bovine serum albumin.
Unit Size	100 µg
Storage	Aliquot and store at -20°C. Minimize freezing and thawing.
Instructions	
Synonym / Alias Names	neurotrophic tyrosine kinase receptor-related 1 dJ537F10.1 NTRKR1 MGC99659 receptor tyrosine kinase-like orphan receptor 1 ROR1
Accession ID	NP_005003.2
Blocking Peptide	EBP09144
Immunogen	Peptide with sequence C-GNKSQKPYKIDSKQA, from the C-Terminus (near) of the protein sequence according to NP_005003.2.
Product Comments	This antibody is expected to recognize isoform 1 (NP_005003.2) only.
Peptide Sequence	C-GNKSQKPYKIDSKQA
Purification Method	Purified from goat serum by ammonium sulphate precipitation followed by antigen affinity chromatography using the immunizing peptide.
Shipping Instructions	Refrigerated
Predicted Species	Human, Mouse, Rat
Reactive Species	Human
Human Gene ID	4919
Mouse Gene ID	26563
Rat Gene ID	362550
Product Grade	https://prod-vector-labs-pimcore-assets.s3.us-east-1.amazonaws.com/assets/products/image/elite_medium.png
IHC Results	Paraffin embedded Human Prostate. Recommended concentration: 4-6µg/ml.
ELISA	
Detection Limit	Antibody detection limit dilution 1:128000.
Application Type	Pep-ELISA, IHC

DOCUMENTS

- [Data Sheet](#)

GALLERY IMAGES

