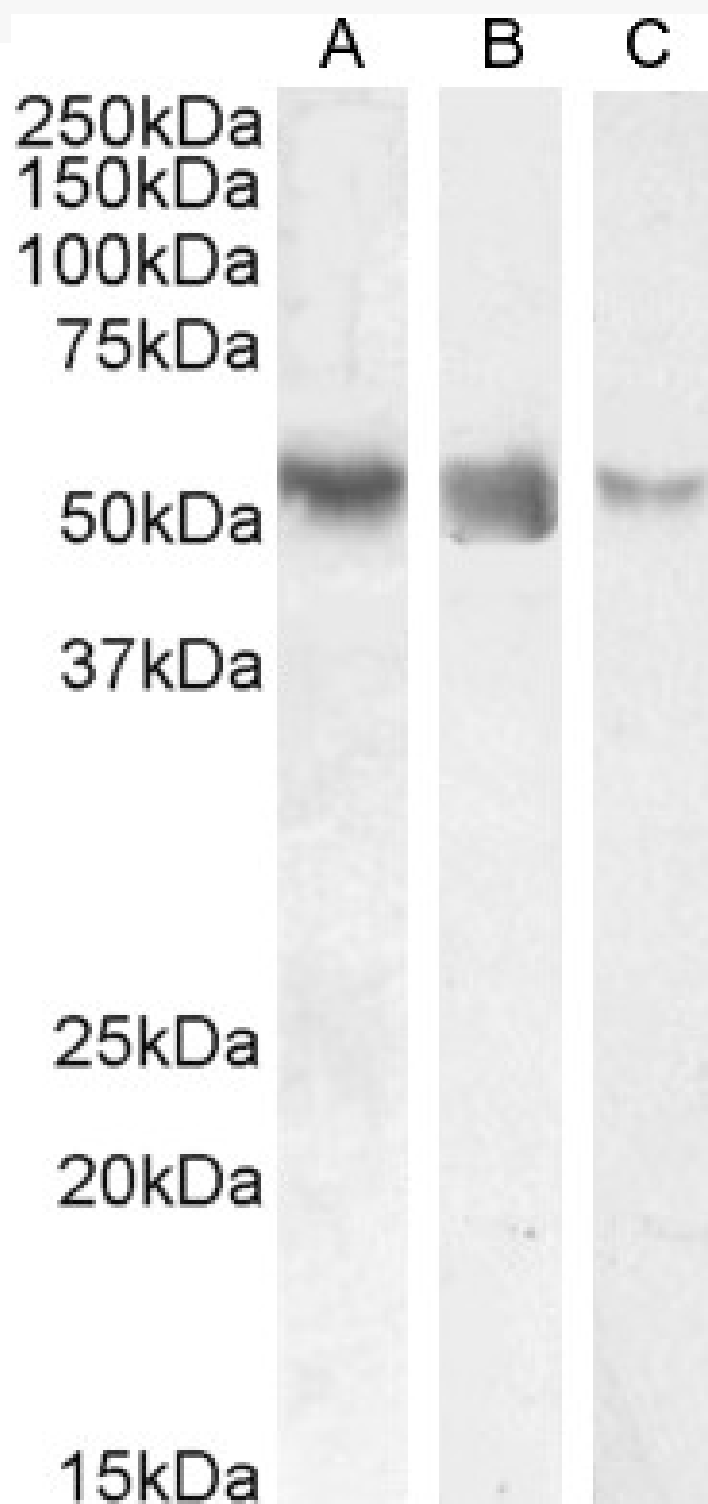


# GOAT ANTI-RORC (AA200-212) ANTIBODY

**SKU:** EB10749



## SPECIFICATIONS

<b>Formulation</b>	Supplied at 0.5 mg/ml in Tris saline, 0.02% sodium azide, pH7.3 with 0.5% bovine serum albumin.
<b>Unit Size</b>	100 µg
<b>Storage</b>	
<b>Instructions</b>	Aliquot and store at -20°C. Minimize freezing and thawing.
<b>Synonym / Alias</b>	nuclear receptor subfamily 1 group F member 1 nuclear receptor RZR-gamma  nuclear receptor ROR-gamma  RAR-related orphan receptor C, isoform a  TOR  RZRG  RZR-GAMMA  RORG  NR1F3  MGC129539  RAR-related orphan receptor C RORC
<b>Names</b>	
<b>Usage</b>	<strong>Immunofluorescence:</strong> Strong expression of the protein seen in U2OS cells. Recommended concentration: 10µg/ml.
<b>Summary</b>	<strong>Flow Cytometry:</strong> Flow cytometric analysis of HeLa cells. Recommended concentration: 10ug/ml.
<b>Accession ID</b>	NP_005051.2; NP_001001523.1
<b>Blocking Peptide</b>	EBP10749
<b>Immunogen</b>	Peptide with sequence CHLEYSERPGKAE, from the internal region of the protein sequence according to NP_005051.2; NP_001001523.1.
<b>Product Comments</b>	This antibody is expected to recognize both reported isoforms (NP_005051.2; NP_001001523.1).
<b>Peptide Sequence</b>	CHLEYSERPGKAE
<b>Purification Method</b>	Purified from goat serum by ammonium sulphate precipitation followed by antigen affinity chromatography using the immunizing peptide.
<b>Shipping Instructions</b>	Refrigerated
<b>Predicted Species</b>	Human, Mouse, Dog, Cow
<b>Reactive Species</b>	Human
<b>Human Gene ID</b>	6097
<b>Mouse Gene ID</b>	19885
<b>Product Grade</b>	<a href="https://prod-vector-labs-pimcore-assets.s3.us-east-1.amazonaws.com/assets/products/image/elite_plus_medium.png">https://prod-vector-labs-pimcore-assets.s3.us-east-1.amazonaws.com/assets/products/image/elite_plus_medium.png</a>
<b>ELISA</b>	
<b>Detection Limit</b>	Antibody detection limit dilution 1:16000.
<b>Western Blot</b>	Approx 55-60kDa band observed in Human Colon, Liver and Testis lysates (calculated MW of 55.8kDa according to NP_001001523.1 and 58.2kDa according to NP_005051.2). Recommended concentration: 0.01-0.1ug/ml. Primary incubation 1 hour at room temperature.
<b>Application Type</b>	Pep-ELISA, WB, IF, FC

## DOCUMENTS

- [Data Sheet](#)

## GALLERY IMAGES

