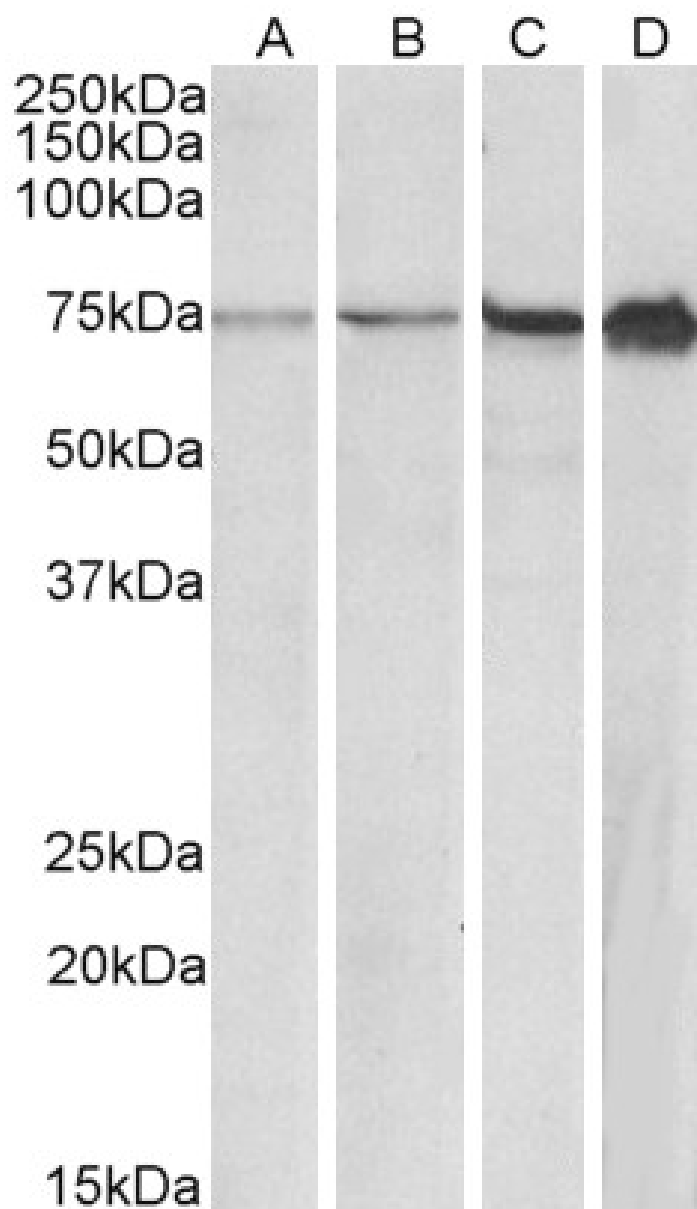


GOAT ANTI-RPA1 / RPA70 (AA323-337) ANTIBODY

SKU: EB12150



SPECIFICATIONS

Formulation	Supplied at 0.5 mg/ml in Tris saline, 0.02% sodium azide, pH7.3 with 0.5% bovine serum albumin.
Unit Size	100 µg
Storage Instructions	Aliquot and store at -20°C. Minimize freezing and thawing.
Synonym / Alias Names	RPA1 replication protein A1, 70kDa HSSB MST075 REPA1 RF-A RP-A RPA70 MSTP075 RF-A protein 1 RP-A p70 replication factor A protein 1 replication protein A 70 kDa DNA-binding subunit single-stranded DNA-binding protein
Accession ID	NP_002936.1
Blocking Peptide	EBP12150
Immunogen	Peptide with sequence CKSYEDATKITVRN, from the internal region of the protein sequence according to NP_002936.1.
Peptide Sequence	CKSYEDATKITVRN
Purification Method	Purified from goat serum by ammonium sulphate precipitation followed by antigen affinity chromatography using the immunizing peptide.
Shipping Instructions	Refrigerated
Predicted Species	Human
Reactive Species	Human, Mouse
Human Gene ID	6117
Product Grade	https://prod-vector-labs-pimcore-assets.s3.us-east-1.amazonaws.com/assets/products/image/elite_medium.png
ELISA Detection Limit	Antibody detection limit dilution 1:128000.
Western Blot	Approx 70+80kDa band observed in lysates of cell line HeLa (calculated MW of 68.1kDa according to NP_002936.1). The upper band likely represents the acetylated protein. A 75kDa band was observed in several Mouse cell lines and in lysates of Mouse Lymph Node. Recommended concentration: 0.3-1µg/ml.
Application Type	Pep-ELISA, WB

DOCUMENTS

- [Data Sheet](#)

GALLERY IMAGES

