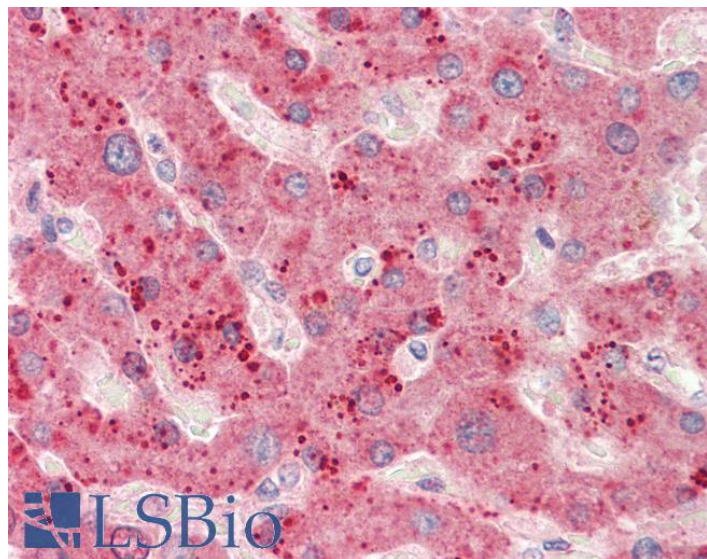


GOAT ANTI-RPL23 ANTIBODY

SKU: EB11851



SPECIFICATIONS

Formulation Supplied at 0.5 mg/ml in Tris saline, 0.02% sodium azide, pH7.3 with 0.5% bovine serum albumin.

Unit Size 100 µg

Storage Instructions Aliquot and store at -20°C. Minimize freezing and thawing.

Synonym / Alias RPL23|rpL17|ribosomal protein L23|ribosomal protein

Names L17|OTTHUMP00000164153|OTTHUMP00000164151|MGC72008|MGC117346|MGC111167|L23|60S ribosomal protein L23|60S ribosomal protein L17

Accession ID NP_000969.1

Blocking Peptide EBP11851

Immunogen Peptide with sequence KECADLWPRIASN, from the C Terminus of the protein sequence according to NP_000969.1.

Peptide Sequence KECADLWPRIASN

Purification Method Purified from goat serum by ammonium sulphate precipitation followed by antigen affinity chromatography using the immunizing peptide.

Shipping Instructions Refrigerated

Predicted Species	Human, Mouse, Rat, Pig, Cow
Reactive Species	Human, Mouse
Human Gene ID	9349
Mouse Gene ID	65019
Rat Gene ID	29282
Product Grade	https://prod-vector-labs-pimcore-assets.s3.us-east-1.amazonaws.com/assets/products/image/elite_medium.png
IHC Results	Paraffin embedded Human Tonsil and Liver. Recommended concentration: 5µg/ml.
ELISA	
Detection Limit	Antibody detection limit dilution 1:128000.
Western Blot	Approx 16kDa band observed in lysates of Human Colorectal Cancer and of cell lines NIH3T3 and HeLa (calculated MW of 14.9kDa according to NP_000969.1). Recommended concentration: 0.1-0.3µg/ml. Primary incubation was 1 hour.
Application Type	Pep-ELISA, WB, IHC

DOCUMENTS

- [Data Sheet](#)

GALLERY IMAGES

