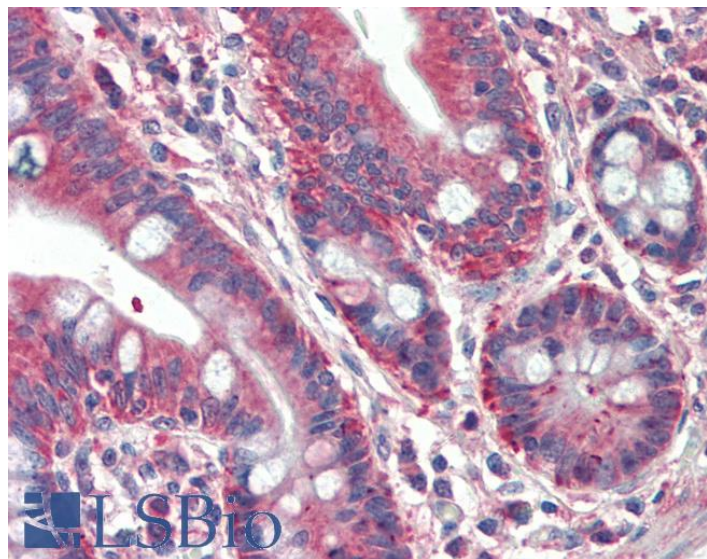


# GOAT ANTI-RUFY1 ANTIBODY

**SKU:** EB10564



## SPECIFICATIONS

**Formulation** Supplied at 0.5 mg/ml in Tris saline, 0.02% sodium azide, pH7.3 with 0.5% bovine serum albumin.

**Unit Size** 100 µg

**Storage Instructions** Aliquot and store at -20°C. Minimize freezing and thawing.

**Synonym / Alias Names** RUFY1| RUN and FYVE domain containing 1| FLJ22251| RABIP4| ZFYVE12| FYVE-finger protein EIP1| OTTHUMP00000223250| RUN and FYVE domain-containing 1| RUN and FYVE domain-containing protein 1| rab4-interacting protein| zinc finger FYVE

**Accession ID** NP\_079434.3; NP\_001035541.1

**Blocking Peptide** EBP10564

**Immunogen** Peptide with sequence C-QKNEAITSFEGKT, from the internal region of the protein sequence according to NP\_079434.3; NP\_001035541.1.

**Product Comments** This antibody is expected to recognize both reported isoforms (NP\_079434.3; NP\_001035541.1). Reported variants represent identical protein: NP\_001035542.1, NP\_001035541.1.

**Peptide Sequence** C-QKNEAITSFEGKT

**Purification Method** Purified from goat serum by ammonium sulphate precipitation followed by antigen affinity chromatography using the immunizing peptide.

<b>Shipping Instructions</b>	Refrigerated
<b>Predicted Species</b>	Human, Mouse, Rat, Dog, Cow
<b>Reactive Species</b>	Human
<b>Human Gene ID</b>	80230
<b>Mouse Gene ID</b>	216724
<b>Rat Gene ID</b>	360521
<b>Product Grade</b>	<a href="https://prod-vector-labs-pimcore-assets.s3.us-east-1.amazonaws.com/assets/products/image/elite_medium.png">https://prod-vector-labs-pimcore-assets.s3.us-east-1.amazonaws.com/assets/products/image/elite_medium.png</a>
<b>IHC Results</b>	Paraffin embedded Human Small Intestine. Recommended concentration: 5µg/ml.
<b>ELISA</b>	
<b>Detection Limit</b>	Antibody detection limit dilution 1:32000.
<b>Western Blot</b>	Approx 85kDa band observed in lysates of cell line HeLa (calculated MW of 79.8kDa according to NP_079434.3). Recommended concentration: 0.05-0.2µg/ml. Primary incubation was 1 hour.
<b>Application Type</b>	Pep-ELISA, WB, IHC

## DOCUMENTS

- [Data Sheet](#)

## GALLERY IMAGES

