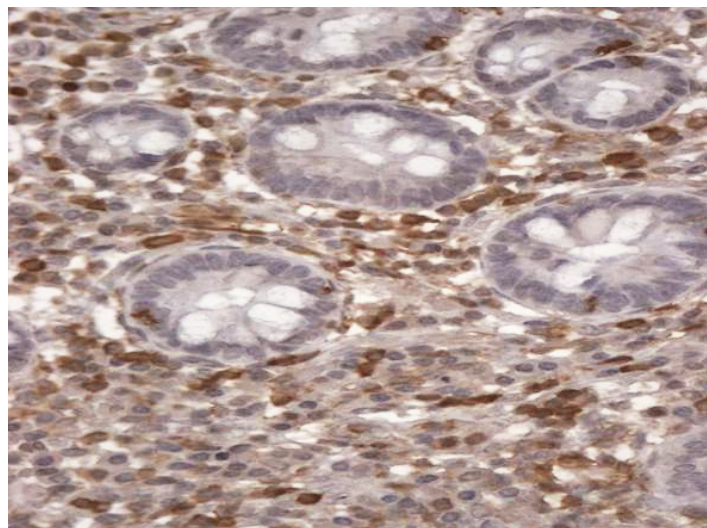


# GOAT ANTI-S100A4 / CAPL ANTIBODY

**SKU:** EB07493



## SPECIFICATIONS

**Formulation** Supplied at 0.5 mg/ml in Tris saline, 0.02% sodium azide, pH7.3 with 0.5% bovine serum albumin.

**Unit Size** 100 µg

**Storage Instructions** Aliquot and store at -20°C. Minimize freezing and thawing.

**Synonym / Alias Names** malignant transformation suppression 1|S100 calcium-binding protein A4 (calcium protein, calvasculin, metastasin, murine placental homolog)|S100 calcium-binding protein A4|S100 calcium binding protein A4 (calcium protein, calvasculin, metastasin, murine placental homolog)|PEL98|P9KA|MTS1|42A|18A2|S100 calcium binding protein A4|CAPL|S100A4

**Accession ID** NP\_002952.1; NP\_062427.1

**Blocking Peptide** EBP07493

**Immunogen** Peptide with sequence CNEFFEGFPDKQP, from the C Terminus of the protein sequence according to NP\_002952.1; NP\_062427.1.

**Product Comments** Both variants (NP\_002952.1; NP\_062427.1) represent identical protein.

**Peptide Sequence** CNEFFEGFPDKQP

**Purification Method** Purified from goat serum by ammonium sulphate precipitation followed by antigen affinity chromatography using the immunizing peptide.

<b>Shipping Instructions</b>	Refrigerated
<b>Predicted Species</b>	Human, Mouse, Rat, Dog
<b>Reactive Species</b>	Human
<b>Human Gene ID</b>	6275
<b>Mouse Gene ID</b>	20198
<b>Rat Gene ID</b>	24615
<b>Product Grade</b>	<a href="https://prod-vector-labs-pimcore-assets.s3.us-east-1.amazonaws.com/assets/products/image/elite_medium.png">https://prod-vector-labs-pimcore-assets.s3.us-east-1.amazonaws.com/assets/products/image/elite_medium.png</a>
<b>IHC Results</b>	In paraffin embedded Human Small Intestine shows staining of lymphatic cells in the lamina propria. Recommended concentration: 1-2µg/ml.
<b>ELISA</b>	
<b>Detection Limit</b>	Antibody detection limit dilution 1:128000.
<b>Western Blot</b>	Approx 13kDa band observed in Human Peripheral blood mononuclear cells lysates (calculated MW of 11.7kDa according to NP_002952.1). Recommended concentration: 0.05-0.2µg/ml. Primary incubation was 1 hour.
<b>Application Type</b>	Pep-ELISA, WB, IHC

## SELECTED REFERENCES

[{"pmid": 24037664, "intro": "**This antibody (previous batch) has been successfully used in Western blot on Human:**", "title": "Comparative secretome analysis of epithelial and mesenchymal subpopulations of head and neck squamous cell carcinoma identifies S100A4 as a potential therapeutic target.", "author": "Rasanen K, Sriswasdi S, Valiga A, Tang HY, Zhang G, Perego M, Somasundaram R, Li L, Speicher K, Klein-Szanto AJ, Basu D, Rustgi AK, Speicher DW, Herlyn M.", "journal": "Mol Cell Proteomics. 2013 Dec;12(12):3778-92."}]

## DOCUMENTS

- [Data Sheet](#)

## GALLERY IMAGES

