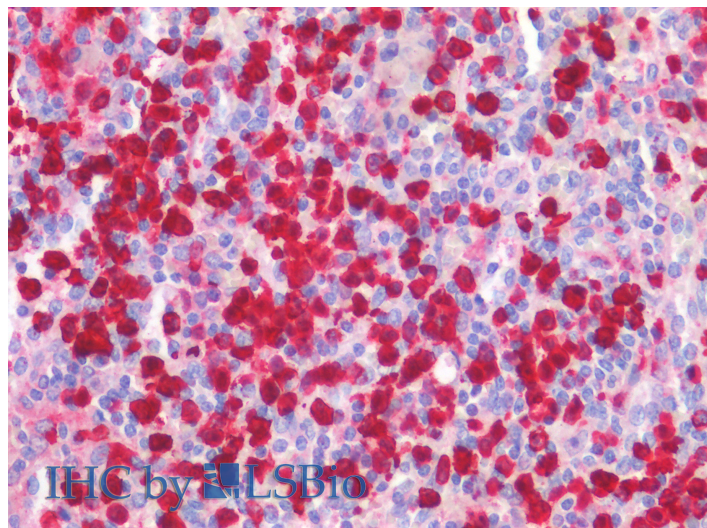


# GOAT ANTI-S100A8 ANTIBODY

**SKU:** EB11513



## SPECIFICATIONS

**Formulation** Supplied at 0.5 mg/ml in Tris saline, 0.02% sodium azide, pH7.3 with 0.5% bovine serum albumin.

**Unit Size** 100 µg

**Storage Instructions** Aliquot and store at -20°C. Minimize freezing and thawing.

**Synonym / Alias Names** urinary stone protein band A|S100A8|S100 calcium-binding protein A8 (calgranulin A)|S100 calcium binding protein A8|protein S100-A8|P8|OTTHUMP00000015329|NIF|MRP-8|MRP8|migration inhibitory factor-related protein 8|MIF|MA387|leukocyte L1 complex light chain|L1Ag|cystic fibrosis antigen|CP-10|CGLA|CFAG|calprotectin L1L subunit|calgranulin-A|calgranulin A|CAGA|60B8AG

**Usage Summary** <strong>Immunofluorescence:</strong> Strong expression of the protein seen in the nuclei and cytoplasmic/extracellular of THP-1 cells. Recommended concentration: 10µg/ml.

**Accession ID** NP\_002955.2

**Blocking Peptide** EBP11513

**Immunogen** Peptide with sequence C-KGADVWFKELDINT, from the internal region of the protein sequence according to NP\_002955.2.

**Peptide Sequence** C-KGADVWFKELDINT

**Purification Method** Purified from goat serum by ammonium sulphate precipitation followed by antigen affinity chromatography using the immunizing peptide.

<b>Shipping Instructions</b>	Refrigerated
<b>Predicted Species</b>	Human
<b>Reactive Species</b>	Human
<b>Human Gene ID</b>	6279
<b>Product Grade</b>	<a href="https://prod-vector-labs-pimcore-assets.s3.us-east-1.amazonaws.com/assets/products/image/elite_medium.png">https://prod-vector-labs-pimcore-assets.s3.us-east-1.amazonaws.com/assets/products/image/elite_medium.png</a>
<b>IHC Results</b>	Paraffin embedded Human Spleen. Recommended concentration: 5µg/ml.
<b>ELISA</b>	
<b>Detection Limit</b>	Antibody detection limit dilution 1:32000.
<b>Application Type</b>	Pep-ELISA, IF, IHC

## DOCUMENTS

- [Data Sheet](#)

## GALLERY IMAGES

