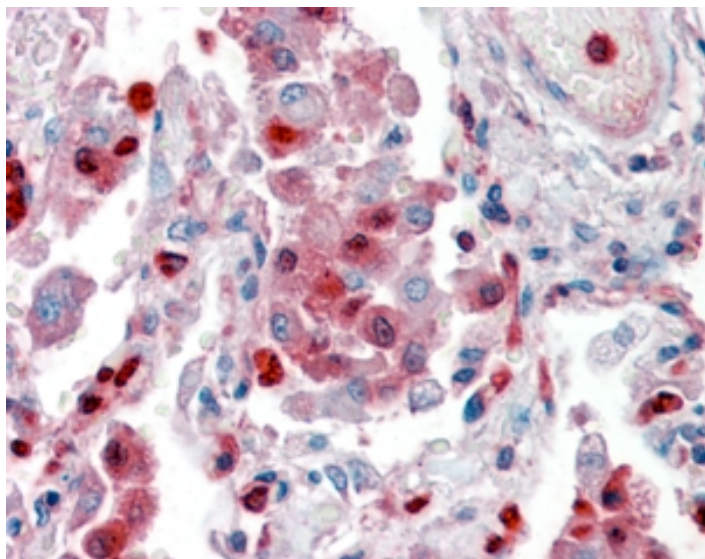


GOAT ANTI-S100A9 ANTIBODY

SKU: EB09146



SPECIFICATIONS

Formulation	Supplied at 0.5 mg/ml in Tris saline, 0.02% sodium azide, pH7.3 with 0.5% bovine serum albumin.
Unit Size	100 µg
Storage Instructions	Aliquot and store at -20°C. Minimize freezing and thawing.
Synonym / Alias Names	calgranulin B S100 calcium-binding protein A9 (calgranulin B) S100 calcium binding protein A9 (calgranulin B) P14 NIF MRP14 MIF MAC387 LIAG L1AG CGLB CFAG CAGB 60B8AG S100 calcium binding protein A9 S100A9
Usage Summary	Immunofluorescence: Strong expression of the protein seen in the cytoplasm and nuclei of MCF7, U2OS and THP-1 cells. Recommended concentration: 10µg/ml. Flow Cytometry: Flow cytometric analysis of MCF7 cells. Recommended concentration: 10ug/ml.
Accession ID	NP_002956.1
Blocking Peptide	EBP09146
Immunogen	Peptide with sequence C-DTNADKQLSFEEF , from the internal region of the protein sequence according to NP_002956.1.
Peptide Sequence	C-DTNADKQLSFEEF
Purification Method	Purified from goat serum by ammonium sulphate precipitation followed by antigen affinity chromatography using the immunizing peptide.

Shipping Instructions	Refrigerated
Predicted Species	Human
Reactive Species	Human
Human Gene ID	6280
Product Grade	https://prod-vector-labs-pimcore-assets.s3.us-east-1.amazonaws.com/assets/products/image/elite_plus_medium.png
IHC Results	Paraffin embedded Human Lung. Recommended concentration: 2-4µg/ml. Paraffin embedded Human Spleen. Recommended concentration: 6-7µg/ml.
ELISA	
Detection Limit	Antibody detection limit dilution 1:8000.
Western Blot	Approx 13-14kDa band observed in Human Bone Marrow lysates and approx 14-15kDa in Human Gastrointestinal cancer lysates (calculated MW of 13.2kDa according to NP_002956.1). Recommended concentration: 0.5-2µg/ml. Primary incubation 1 hour at room temperature.
Application Type	Pep-ELISA, WB, IHC, IF, FC

DOCUMENTS

- [Data Sheet](#)

GALLERY IMAGES

