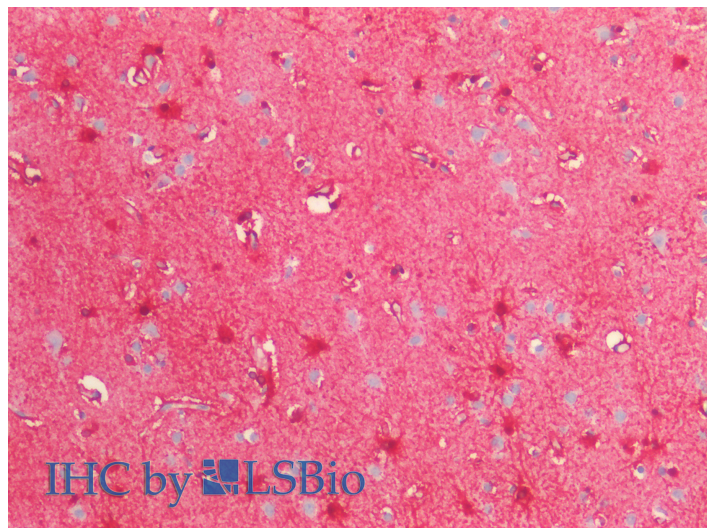


GOAT ANTI-S100B ANTIBODY

SKU: EB12316



SPECIFICATIONS

Formulation Supplied at 0.5 mg/ml in Tris saline, 0.02% sodium azide, pH7.3 with 0.5% bovine serum albumin.

Unit Size 100 µg

Storage Instructions Aliquot and store at -20°C. Minimize freezing and thawing.

Synonym / Alias Names protein S100-B|S100 calcium-binding protein, beta (neural)|S-100 protein subunit beta|S-100 calcium-binding protein, beta chain|S100beta|S100-B|S100|NEF|S100 calcium binding protein B|S100B

Accession ID NP_006263.1

Blocking Peptide EBP12316

Immunogen Peptide with sequence C-SHFLEEIKEQEVVD, from the internal region of the protein sequence according to NP_006263.1.

Peptide Sequence C-SHFLEEIKEQEVVD

Purification Method Purified from goat serum by ammonium sulphate precipitation followed by antigen affinity chromatography using the immunizing peptide.

Shipping Instructions Refrigerated

Predicted Species	Human
Reactive Species	Human
Human Gene ID	6285
Product Grade	https://prod-vector-labs-pimcore-assets.s3.us-east-1.amazonaws.com/assets/products/image/elite_medium.png
IHC Results	Paraffin embedded Human Brain (Cortex). Recommended concentration: 5µg/ml.
ELISA	
Detection Limit	Antibody detection limit dilution 1:32000.
Western Blot	Approx 10kDa band observed in Human Brain (Olfactory Bulb and Cerebellum) lysates (calculated MW of 10.7kDa according to NP_006263.1). Recommended concentration: 1-3µg/ml.
Application Type	Pep-ELISA, WB, IHC

DOCUMENTS

- [Data Sheet](#)

GALLERY IMAGES

