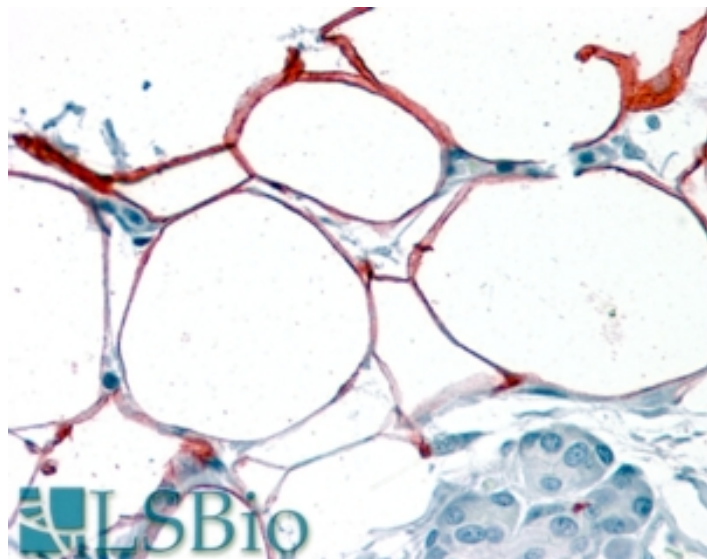


GOAT ANTI-S3-12 / KIAA1881 ANTIBODY

SKU: EB07731



SPECIFICATIONS

Formulation Supplied at 0.5 mg/ml in Tris saline, 0.02% sodium azide, pH7.3 with 0.5% bovine serum albumin.

Unit Size 100 µg

Storage Instructions Aliquot and store at -20°C. Minimize freezing and thawing.

Synonym /

Alias hCG1646516|plasma membrane associated protein, S3-12|S3-12|KIAA1881

Names

Accession ID NP_001073869.1

Blocking Peptide EBP07731

Immunogen Peptide with sequence C-RTTDNGGEQTALSPQE, from the internal region of the protein sequence according to NP_001073869.1.

Peptide Sequence C-RTTDNGGEQTALSPQE

Purification Method Purified from goat serum by ammonium sulphate precipitation followed by antigen affinity chromatography using the immunizing peptide.

Shipping Instructions Refrigerated

Predicted Species	Human
Reactive Species	Human
Human Gene ID	729359
Product Grade	https://prod-vector-labs-pimcore-assets.s3.us-east-1.amazonaws.com/assets/products/image/elite_medium.png
IHC Results	In paraffin embedded Human Pancreas shows membranous and cytoplasm staining in adipocytes. Recommended concentration, 3-6µg/ml.
ELISA Detection Limit	Antibody detection limit dilution 1:2000.
Western Blot	Preliminary experiments gave bands at approx 45kDa and 50kDa in Human Adipose lysates after 0.1µg/ml antibody staining. Please note that currently we cannot find an explanation in the literature for the bands we observe given the calculated size of 134kDa according to NP_001073869.1. Both detected bands were successfully blocked by incubation with the immunizing peptide (and BLAST results with the immunizing peptide sequence did not identify any other proteins to explain the additional bands).
Application Type	Pep-ELISA, IHC

DOCUMENTS

- [Data Sheet](#)

GALLERY IMAGES

