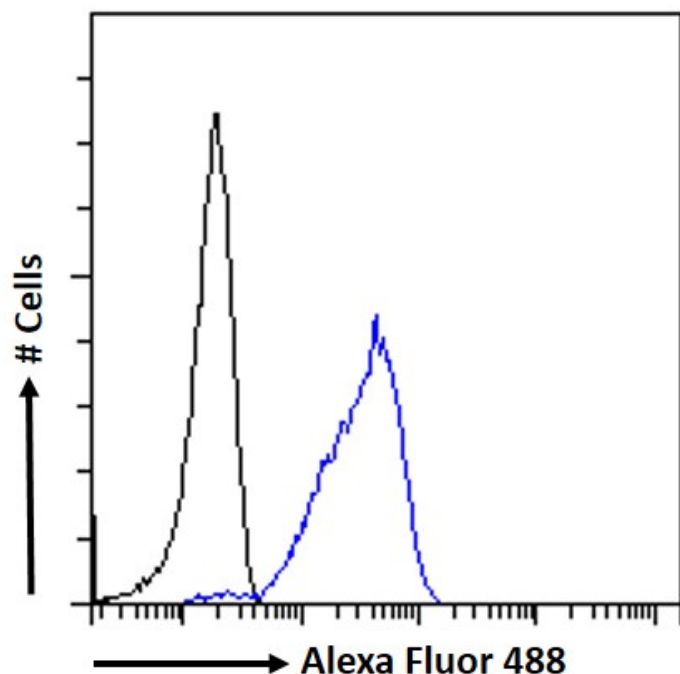


GOAT ANTI-SAE1 / AOS1 ANTIBODY

SKU: EB06097



SPECIFICATIONS

Formulation Supplied at 0.5 mg/ml in Tris saline, 0.02% sodium azide, pH7.3 with 0.5% bovine serum albumin.

Unit Size 100 µg

Storage Instructions Aliquot and store at -20°C. Minimize freezing and thawing.

Synonym / Alias Names ubiquitin-like 1-activating enzyme E1A|activator of SUMO1|UBLE1A|FLJ3091|SUMO1 activating enzyme subunit 1|ubiquitin-like protein SUMO-1 activating enzyme|SUMO-1 activating enzyme E1 N subunit|sentrin/SUMO-activating protein AOS1|SUMO-1 activating enzyme subunit 1|HSPC140|SUA1|AOS1|SAE1

Usage Summary **Flow Cytometry:** Flow cytometric analysis of A431 cells. Recommended concentration: 10ug/ml.

Accession ID NP_005491.1

Blocking Peptide EBP06097

Immunogen Peptide with sequence MKGNGIVECLGPK, from the C Terminus of the protein sequence according to NP_005491.1.

Peptide Sequence	MKGNGIVECLGPK
Purification Method	Purified from goat serum by ammonium sulphate precipitation followed by antigen affinity chromatography using the immunizing peptide.
Shipping Instructions	Refrigerated
Predicted Species	Human
Reactive Species	Human
Human Gene ID	10055
Product Grade	https://prod-vector-labs-pimcore-assets.s3.us-east-1.amazonaws.com/assets/products/image/elite_medium.png
ELISA Detection Limit	Antibody detection limit dilution 1:32000.
Western Blot	Approx. 37kDa band observed in lysates of cell lines HEK293 and A549, and approx. 38-40kDa in lysates of cell line Jurkat (calculated MW of 38.4kDa according to NP_005491.1). Recommended concentration: 0.5-2µg/ml. Primary incubation 1 hour at room temperature.
Application Type	Pep-ELISA, WB, FC

DOCUMENTS

- [Data Sheet](#)

GALLERY IMAGES

