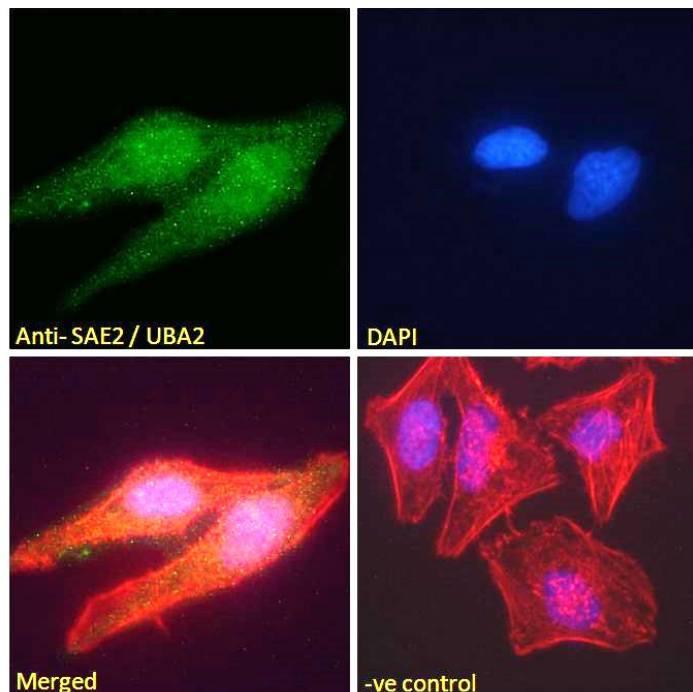


GOAT ANTI-SAE2 / UBA2 ANTIBODY

SKU: EB06098



SPECIFICATIONS

Formulation Supplied at 0.5 mg/ml in Tris saline, 0.02% sodium azide, pH7.3 with 0.5% bovine serum albumin.

Unit Size 100 µg

Storage Instructions Aliquot and store at -20°C. Minimize freezing and thawing.

Synonym /

Alias UBA2|SAE2|SUMO-1 activating enzyme subunit 2

Names

Usage **Immunofluorescence:** Strong expression of the protein seen in the nuclei of U2OS and HeLa cells. Recommended concentration: 10µg/ml.

Accession ID NP_005490

Blocking Peptide EBP06098

Immunogen Peptide with sequence ALSRGLPRELAEA-C, from the N Terminus of the protein sequence according to NP_005490.

Peptide Sequence	ALSRGLPRELAEA-C
Purification Method	Purified from goat serum by ammonium sulphate precipitation followed by antigen affinity chromatography using the immunizing peptide.
Shipping Instructions	Refrigerated
Predicted Species	Human, Mouse, Cow
Reactive Species	Human, Mouse
Human Gene ID	10054
Mouse Gene ID	50995
Product Grade	https://prod-vector-labs-pimcore-assets.s3.us-east-1.amazonaws.com/assets/products/image/elite_medium.png
ELISA Detection Limit	Antibody detection limit dilution 1:16000.
Western Blot	This product has been successfully used in Western blot on Mouse: Kanemaru A, Saitoh H., Biosci Biotechnol Biochem. 2013;77(7):1575-8. PMID: 23832333.
Application Type	Pep-ELISA, WB, IF

SELECTED REFERENCES

[{"pmid": 23832333, "intro": "**This antibody has been successfully used in Western blot on Mouse:**", "title": "High-yield expression of mouse Aos1-Uba2-fusion\r\nSUMO-activating enzyme, mAU, in a baculovirus-insect cell system.", "author": "Kanemaru A, Saitoh H.", "journal": "Biosci Biotechnol Biochem. 2013;77(7):1575-8."}]

DOCUMENTS

- [Data Sheet](#)

GALLERY IMAGES

