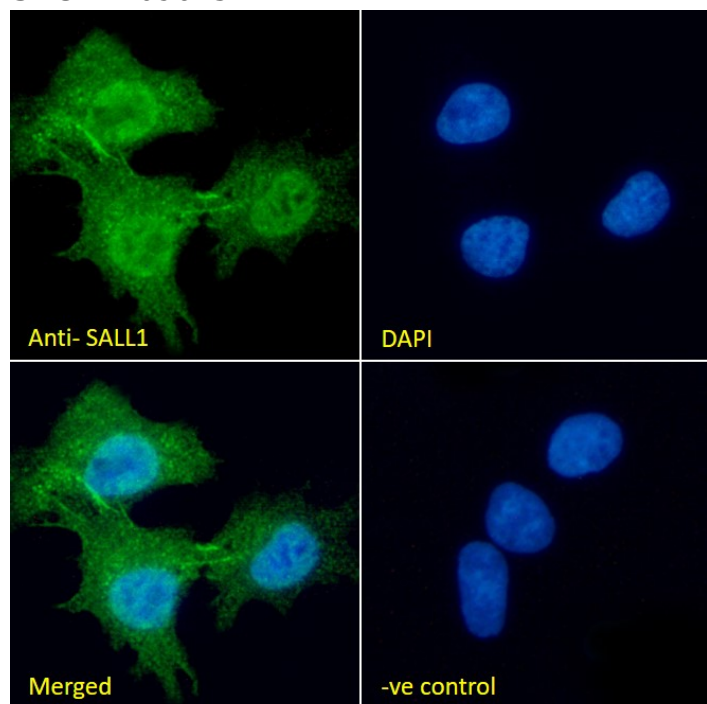


GOAT ANTI-SALL1 (AA29-43) ANTIBODY

SKU: EB09625



SPECIFICATIONS

Formulation Supplied at 0.5 mg/ml in Tris saline, 0.02% sodium azide, pH7.3 with 0.5% bovine serum albumin.

Unit Size 100 µg

Storage Instructions Aliquot and store at -20°C. Minimize freezing and thawing.

Synonym /

Alias Names spalt-like transcription factor 1|sal-like 1|ZNF794|TBS|HSAL1|sal-like 1 (Drosophila)|SALL1

Usage Summary **Immunofluorescence:** Strong expression of the protein seen in the nuclei and cytoplasm of HepG2 cells. Recommended concentration: 10µg/ml. **Flow Cytometry:** Flow cytometric analysis of HepG2 cells. Recommended concentration: 10ug/ml.

Accession ID NP_002959.2

Blocking Peptide EBP09625

Immunogen	Peptide with sequence EKGQPSRPTKSKDAH-C, from the N Terminus of the protein sequence according to NP_002959.2.
Peptide Sequence	EKGQPSRPTKSKDAH-C
Purification Method	Purified from goat serum by ammonium sulphate precipitation followed by antigen affinity chromatography using the immunizing peptide.
Shipping Instructions	Refrigerated
Predicted Species	Human, Mouse, Rat
Reactive Species	Human
Human Gene ID	6299
Mouse Gene ID	58198
Product Grade	https://prod-vector-labs-pimcore-assets.s3.us-east-1.amazonaws.com/assets/products/image/elite_medium.png
ELISA Detection Limit	Antibody detection limit dilution 1:32000.
Application Type	Pep-ELISA, IF, FC

DOCUMENTS

- [Data Sheet](#)

GALLERY IMAGES

