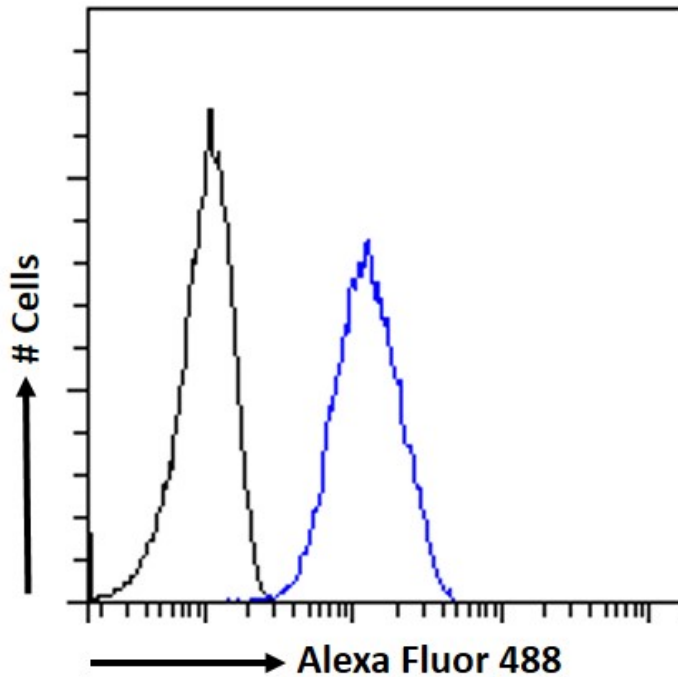




GOAT ANTI-SALVADOR HOMOLOG 1 ANTIBODY

SKU: EB08052



SPECIFICATIONS

Formulation Supplied at 0.5 mg/ml in Tris saline, 0.02% sodium azide, pH7.3 with 0.5% bovine serum albumin.

Unit Size 100 µg

Storage Instructions Aliquot and store at -20°C. Minimize freezing and thawing.

Synonym / Alias Names WW45 protein|WW domain-containing|1700040G09Rik|WWP4|WW45|SAV|salvador homolog 1 (Drosophila)|SAV1

Usage Summary **Immunofluorescence:** Strong expression of the protein seen in the cytoplasm of A431 cells. Recommended concentration: 10µg/ml. **Flow Cytometry:** Flow cytometric analysis of A431 cells. Recommended concentration: 10ug/ml.

Accession ID NP_068590.1

Blocking Peptide EBP08052



| | |
|------------------------------|---|
| Immunogen | Peptide with sequence DHTNKKAQYRHPC, from the internal region of the protein sequence according to NP_068590.1. |
| Peptide Sequence | DHTNKKAQYRHPC |
| Purification Method | Purified from goat serum by ammonium sulphate precipitation followed by antigen affinity chromatography using the immunizing peptide. |
| Shipping Instructions | Refrigerated |
| Predicted Species | Human, Cow |
| Reactive Species | Human |
| Human Gene ID | 60485 |
| Product Grade | https://prod-vector-labs-pimcore-assets.s3.us-east-1.amazonaws.com/assets/products/image/elite_medium.png |
| ELISA Detection Limit | Antibody detection limit dilution 1:128000. |
| Western Blot | Preliminary testing showed a band at approx. 48kDa in HeLa cell lysate after 0.3µg/ml antibody staining (calculated MW of 44.6kDa according to NP_068590.1). Primary incubation 1 hour at room temperature. |
| Application Type | Pep-ELISA, IF, FC |

DOCUMENTS

- [Data Sheet](#)

GALLERY IMAGES

