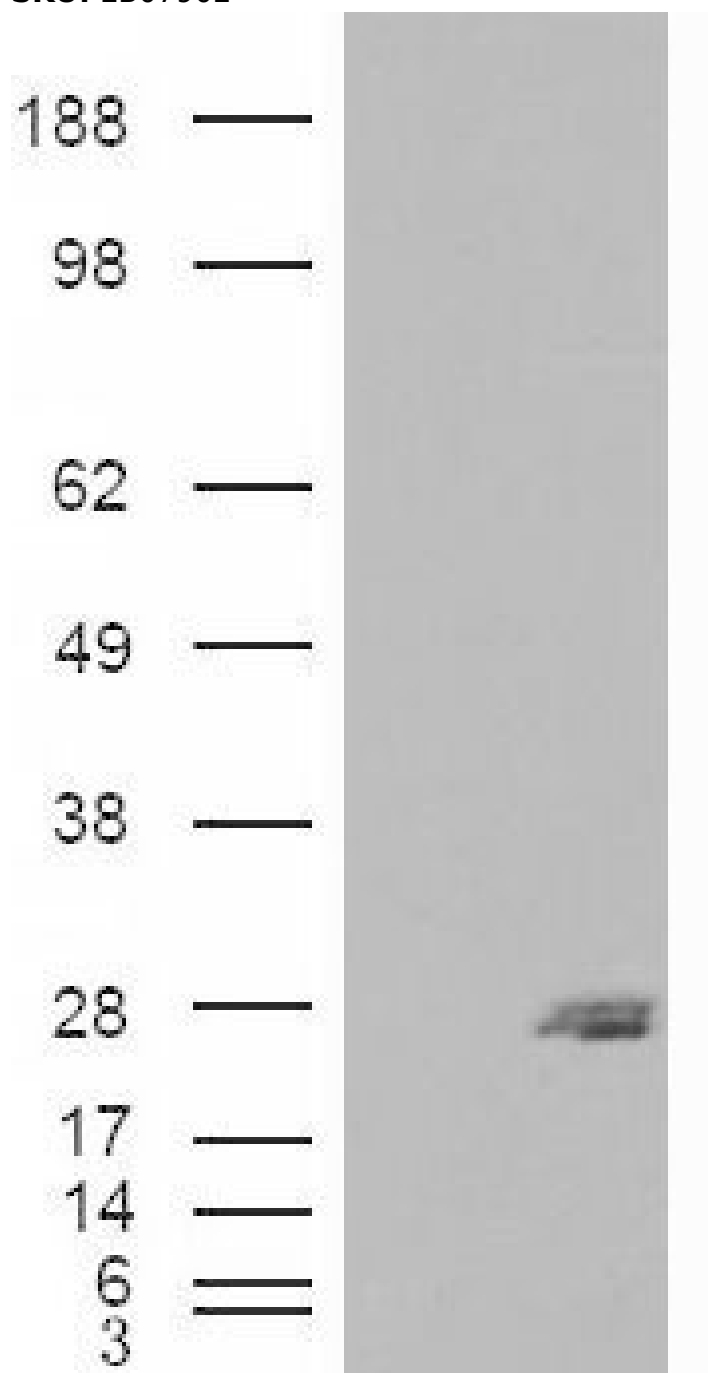


GOAT ANTI-SAR1B / SARA2 ANTIBODY

SKU: EB07902



SPECIFICATIONS

Formulation	Supplied at 0.5 mg/ml in Tris saline, 0.02% sodium azide, pH7.3 with 0.5% bovine serum albumin.
Unit Size	100 µg
Storage Instructions	Aliquot and store at -20°C. Minimize freezing and thawing.
Synonym / Alias Names	SAR1B SARA2 SAR1 gene homolog B (S. cerevisiae) CMRD GTBPB 2310075M17Rik GTP-binding protein Sara SAR1a gene homolog 2
Accession ID	NP_001028675.1; NP_057187.1
Blocking Peptide	EBP07902
Immunogen	Peptide with sequence C-DHERLLESKEELD, from the internal region of the protein sequence according to NP_001028675.1; NP_057187.1.
Product Comments	Both reported variants (NP_001028675.1 and NP_057187.1) represent identical protein
Peptide Sequence	C-DHERLLESKEELD
Purification Method	Purified from goat serum by ammonium sulphate precipitation followed by antigen affinity chromatography using the immunizing peptide.
Shipping Instructions	Refrigerated
Predicted Species	Human, Mouse, Rat
Reactive Species	Mouse, Rat
Human Gene ID	51128
Mouse Gene ID	66397
Rat Gene ID	287276
Product Grade	https://prod-vector-labs-pimcore-assets.s3.us-east-1.amazonaws.com/assets/products/image/elite_medium.png
ELISA Detection Limit	Antibody detection limit dilution 1:8000.
Western Blot	Approx. 25kDa band observed in Mouse Liver and Rat Liver lysates (calculated MW of 22.4kDa according to human NP_057187.1 and mouse NP_079811.1). In transfected HEK293 transiently expressing SAR1B a band of approx. 26kDa is observed. This band is not observed in the non-transfected HEK293. Recommended concentration: 0.03-0.1µg/ml.
Application Type	Pep-ELISA, WB

DOCUMENTS

- [Data Sheet](#)

GALLERY IMAGES

