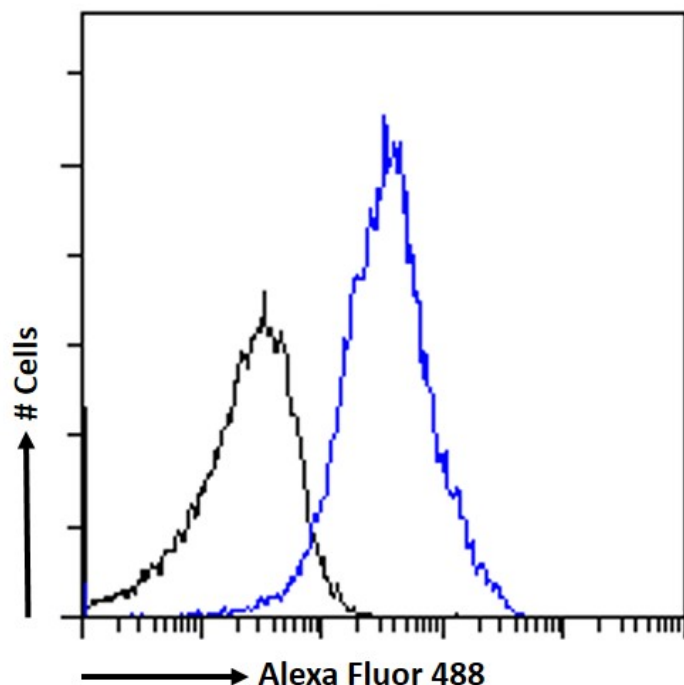


GOAT ANTI-SATB1 ANTIBODY

SKU: EB09448



SPECIFICATIONS

Formulation	Supplied at 0.5 mg/ml in Tris saline, 0.02% sodium azide, pH7.3 with 0.5% bovine serum albumin.
Unit Size	100 µg
Storage Instructions	Aliquot and store at -20°C. Minimize freezing and thawing.
Synonym / Alias Names	special AT-rich sequence binding protein 1 (binds to nuclear matrix/scaffold-associating DNA[1s]) special AT-rich sequence binding protein 1 DNA-binding protein SATB1 SATB homeobox 1 SATB1
Usage Summary	<p>Immunofluorescence: Strong expression of the protein seen in the nuclei of Jurkat cells.</p> <p>Flow Cytometry: Flow cytometric analysis of Jurkat cells. Recommended concentration: 10ug/ml.</p>
Accession ID	NP_002962.1; NP_001182399.1; NP_001309805.1
Blocking Peptide	EBP09448

Immunogen	Peptide with sequence C-ESDEENRQKTRPRT, from the internal region of the protein sequence according to NP_002962.1; NP_001182399.1; NP_001309805.1.
Peptide Sequence	C-ESDEENRQKTRPRT
Purification Method	Purified from goat serum by ammonium sulphate precipitation followed by antigen affinity chromatography using the immunizing peptide.
Shipping Instructions	Refrigerated
Predicted Species	Human, Mouse, Rat, Cow
Reactive Species	Human
Human Gene ID	6304
Mouse Gene ID	20230
Rat Gene ID	316164
Product Grade	https://prod-vector-labs-pimcore-assets.s3.us-east-1.amazonaws.com/assets/products/image/elite_plus_medium.png
IHC Results	In paraffin embedded Human Thymus shows select nuclear staining. Recommended concentration: 3-5µg/ml.
ELISA Detection Limit	Antibody detection limit dilution 1:32000.
Western Blot	Approx. 90kDa band observed in nuclear lysates of cell lines A431 and Jurkat and in lysates of cell lines U251 and Daudi (calculated MW of 89.0kDa according to NP_001182399.1). Recommended concentration: 0.1-0.5µg/ml. Primary incubation 1 hour at room temperature.
Application Type	Pep-ELISA, WB, IHC, IF, FC

DOCUMENTS

- [Data Sheet](#)

GALLERY IMAGES

