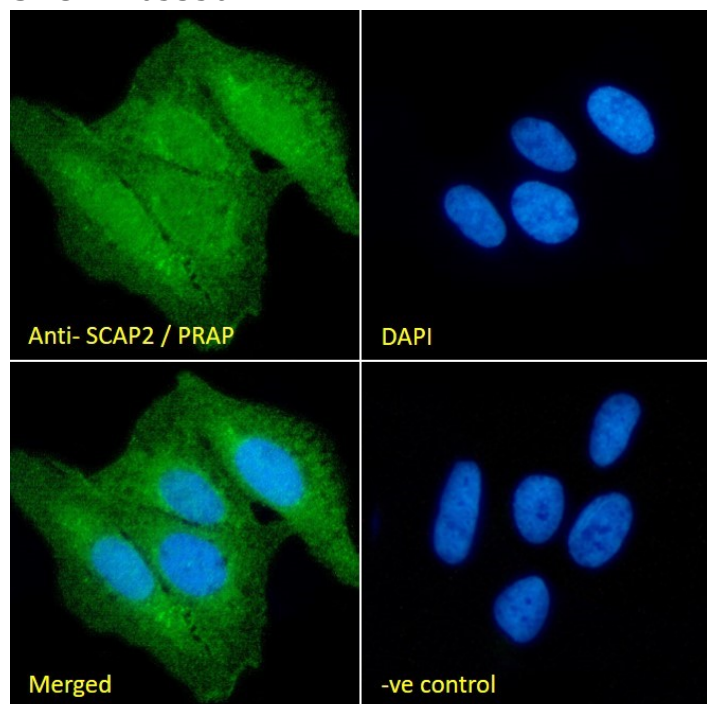


GOAT ANTI-SCAP2 / PRAP ANTIBODY

SKU: EB05356



SPECIFICATIONS

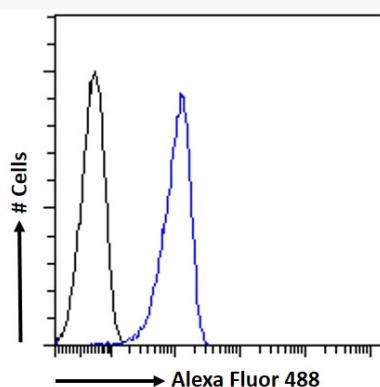
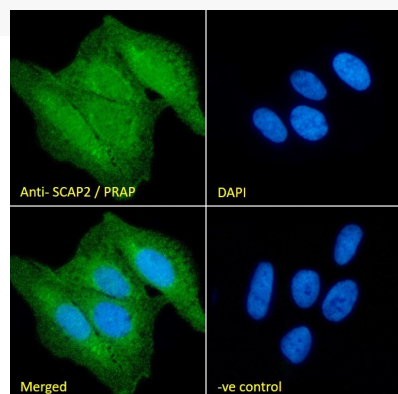
Formulation	Supplied at 0.5 mg/ml in Tris saline, 0.02% sodium azide, pH7.3 with 0.5% bovine serum albumin.
Unit Size	100 µg
Storage	
Instructions	Aliquot and store at -20°C. Minimize freezing and thawing.
Synonym / Alias Names	src-associated adaptor protein src kinase-associated phosphoprotein of 55-related protein src family associated phosphoprotein 2 Pyk2/RAFTK-associated protein Fyn-associated phosphoprotein SKAP55 homologue SKAP55R SKAP-HOM SCAP2 SAPS RA70 MGC33304 MGC10411 src family associated phosphoprotein 2 PRAP SCAP2 SKAP2
Usage Summary	<p>Immunofluorescence: Strong expression of the protein seen in K562 and U2OS cells.</p> <p>Recommended concentration: 10µg/ml.</p> <p>Flow Cytometry: Flow cytometric analysis of A431 cells. Recommended concentration: 10ug/ml.</p>
Accession ID	NP_003921.2; NP_001290397.1
Blocking Peptide	EBP05356

Immunogen	Peptide with sequence C-GLVPKAYIMEMYDI, from the C Terminus of the protein sequence according to NP_003921.2; NP_001290397.1.
Peptide Sequence	C-GLVPKAYIMEMYDI
Purification Method	Purified from goat serum by ammonium sulphate precipitation followed by antigen affinity chromatography using the immunizing peptide.
Shipping Instructions	Refrigerated
Predicted Species	Human
Reactive Species	Human
Human Gene ID	8935
Product Grade	https://prod-vector-labs-pimcore-assets.s3.us-east-1.amazonaws.com/assets/products/image/elite_plus_medium.png
ELISA Detection Limit	Antibody detection limit dilution 1:3000. Approx. 26+37kDa bands observed in lysates of cell line K562, and approx. 28+38kDa in preliminary testing of U937 cell lysate (calculated MW of 21.6kDa according to NP_001290397.1 and 41.2kDa according to NP_003921.2).
Western Blot	Both bands were successfully blocked by incubation with the immunising peptide. Recommended concentration: 0.5-1µg/ml. Primary incubation 1 hour at room temperature. An additional band of unknown identity was also consistently observed in Jurkat at 28kDa. This band was successfully blocked by incubation with the immunising peptide.
Application Type	Pep-ELISA, WB, IF, FC

DOCUMENTS

- [Data Sheet](#)

GALLERY IMAGES



250kDa
150kDa
100kDa
75kDa
50kDa
37kDa
25kDa
20kDa
15kDa



A 05356 , 2, K562

