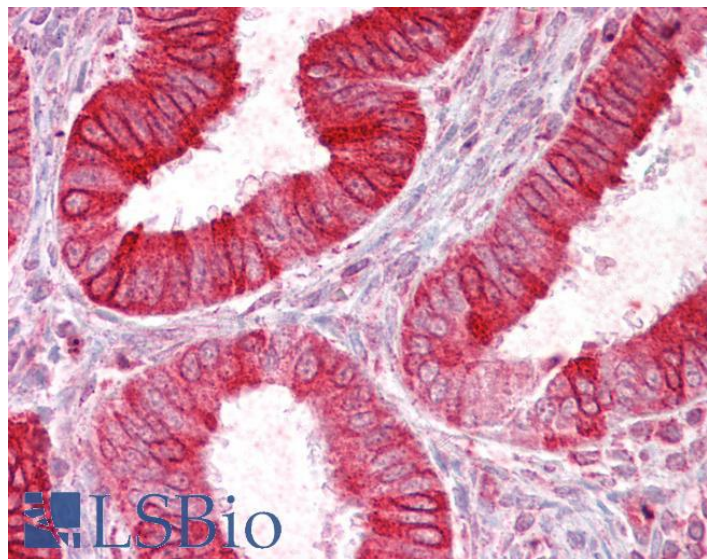


# GOAT ANTI-SCNN1D ANTIBODY

**SKU:** EB08952



## SPECIFICATIONS

**Formulation** Supplied at 0.5 mg/ml in Tris saline, 0.02% sodium azide, pH7.3 with 0.5% bovine serum albumin.

**Unit Size** 100 µg

**Storage Instructions** Aliquot and store at -20°C. Minimize freezing and thawing.

**Synonym / Alias Names** sodium channel, voltage-gated, type I, delta polypeptide|sodium channel nonvoltage-gated 1 delta|dNaCh|SCNED|MGC149711|MGC149710|ENaCdelta|ENaCd|sodium channel, nonvoltage-gated 1, delta|SCNN1D

**Accession ID** NP\_002969.2

**Blocking Peptide** EBP08952

**Immunogen** Peptide with sequence C-AGPQPLETLDT, from the C Terminus of the protein sequence according to NP\_002969.2.

**Peptide Sequence** C-AGPQPLETLDT

**Purification Method** Purified from goat serum by ammonium sulphate precipitation followed by antigen affinity chromatography using the immunizing peptide.

**Shipping Instructions** Refrigerated

<b>Predicted Species</b>	Human
<b>Reactive Species</b>	Human
<b>Human Gene ID</b>	6339
<b>Product Grade</b>	<a href="https://prod-vector-labs-pimcore-assets.s3.us-east-1.amazonaws.com/assets/products/image/elite_medium.png">https://prod-vector-labs-pimcore-assets.s3.us-east-1.amazonaws.com/assets/products/image/elite_medium.png</a>
<b>IHC Results</b>	Paraffin embedded Human Uterus. Recommended concentration: 2.5µg/ml.
<b>ELISA</b>	
<b>Detection Limit</b>	Antibody detection limit dilution 1:16000.
<b>Application Type</b>	Pep-ELISA, IHC

## DOCUMENTS

- [Data Sheet](#)

## GALLERY IMAGES

