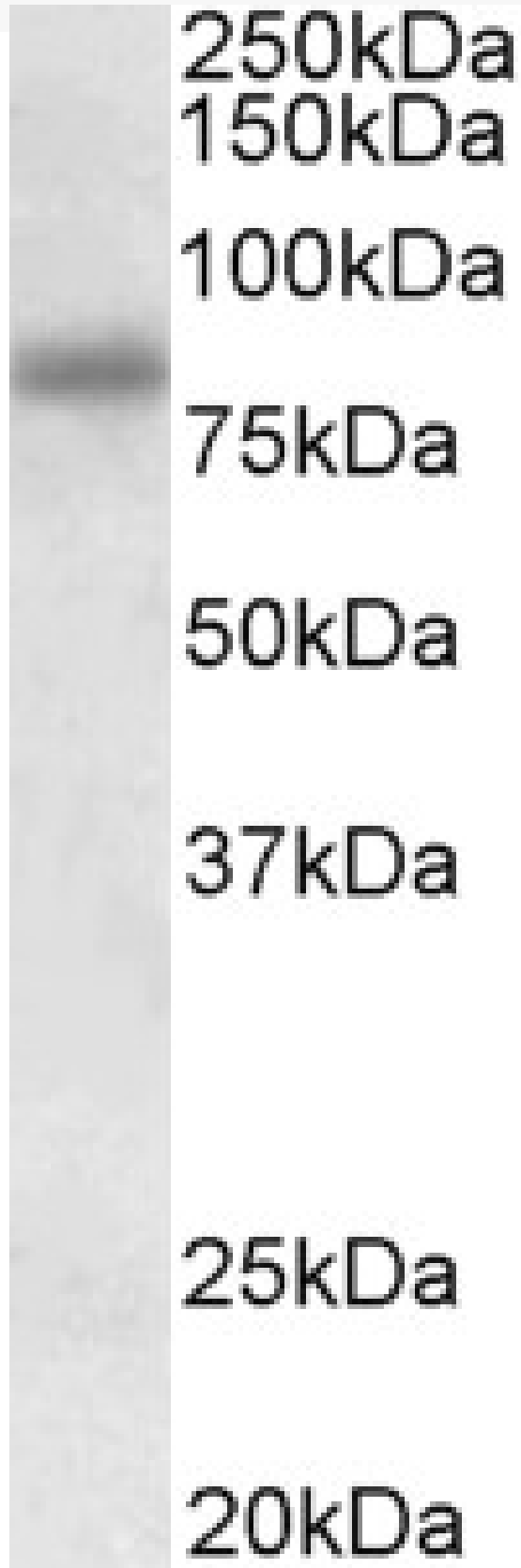


GOAT ANTI-SDCCAG8 ANTIBODY

SKU: EB11471



SPECIFICATIONS

| | |
|------------------------------|---|
| Formulation | Supplied at 0.5 mg/ml in Tris saline, 0.02% sodium azide, pH7.3 with 0.5% bovine serum albumin. |
| Unit Size | 100 µg |
| Storage Instructions | Aliquot and store at -20°C. Minimize freezing and thawing. |
| Synonym / Alias Names | antigen NY-CO-8 BBS16 CCCAP centrosomal colon cancer autoantigen protein hCCCAP NPHP10 NY-CO-8 OTTHUMP00000037913 SDCCAG8 serologically defined colon cancer antigen 8 SLSN7 |
| Accession ID | NP_006633.1 |
| Blocking Peptide | EBP11471 |
| Immunogen | Peptide with sequence C-TINDQSQYIHHLEAE, from the internal region of the protein sequence according to NP_006633.1. |
| Peptide Sequence | C-TINDQSQYIHHLEAE |
| Purification Method | Purified from goat serum by ammonium sulphate precipitation followed by antigen affinity chromatography using the immunizing peptide. |
| Shipping Instructions | Refrigerated |
| Predicted Species | Human, Mouse, Rat, Dog, Pig |
| Reactive Species | Human |
| Human Gene ID | 10806 |
| Mouse Gene ID | 76816 |
| Rat Gene ID | 305002 |
| Product Grade | https://prod-vector-labs-pimcore-assets.s3.us-east-1.amazonaws.com/assets/products/image/elite_medium.png |
| IHC Results | Paraffin embedded Human Brain (Cortex). Recommended concentration: 5µg/ml. |
| ELISA Detection Limit | Antibody detection limit dilution 1:128000. |
| Western Blot | Approx 80kDa band observed in lysates of cell line HEK293 (calculated MW of 82.7kDa according to NP_006633.1). Recommended concentration: 0.3-1µg/ml. Primary incubation was 1 hour. |
| Application Type | Pep-ELISA, WB, IHC |

DOCUMENTS

- [Data Sheet](#)

GALLERY IMAGES

