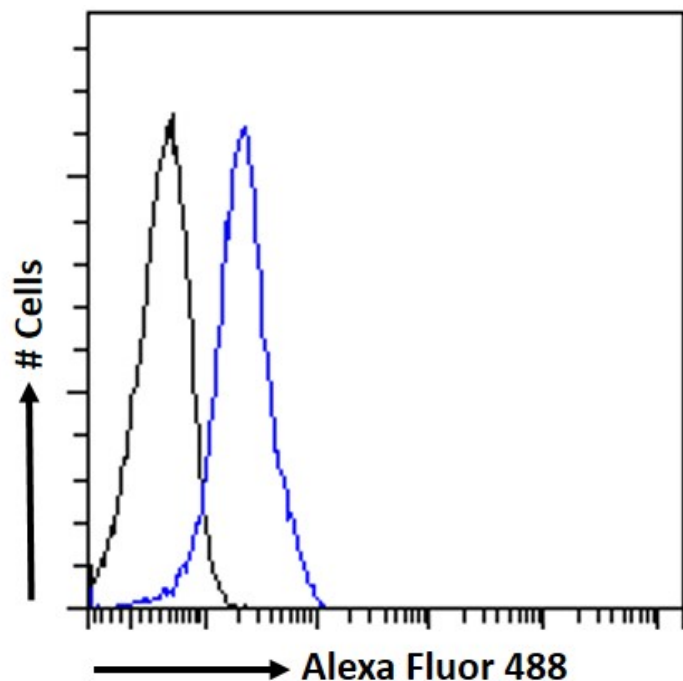


GOAT ANTI-SEMA3E ANTIBODY

SKU: EB06661



SPECIFICATIONS

Formulation	Supplied at 0.5 mg/ml in Tris saline, 0.02% sodium azide, pH7.3 with 0.5% bovine serum albumin.
Unit Size	100 µg
Storage Instructions	Aliquot and store at -20°C. Minimize freezing and thawing.
Synonym / Alias Names	sema domain, immunoglobulin domain (Ig), short basic domain, secreted, 3E sema domain, immunoglobulin domain (Ig), short basic domain, secreted, (semaphorin) 3E M-sema H KIAA0331 M-SemaK M-SEMAH coll-5 SEMAH SEMA3E
Usage Summary	<p>Immunofluorescence: Strong expression of the protein seen in MCF7 and U2OS cells.</p> <p>Recommended concentration: 10µg/ml.</p> <p>Flow Cytometry: Flow cytometric analysis of MCF7 cells. Recommended concentration: 10ug/ml.</p>
Accession ID	NP_036563.1; NP_001171600.1
Blocking Peptide	EBP06661

Immunogen	Peptide with sequence C-KPEHYRLPRHTLDS, from the C Terminus of the protein sequence according to NP_036563.1; NP_001171600.1.
Peptide Sequence	C-KPEHYRLPRHTLDS
Purification Method	Purified from goat serum by ammonium sulphate precipitation followed by antigen affinity chromatography using the immunizing peptide.
Shipping Instructions	Refrigerated
Predicted Species	Human
Reactive Species	Human
Human Gene ID	9723
Product Grade	https://prod-vector-labs-pimcore-assets.s3.us-east-1.amazonaws.com/assets/products/image/elite_plus_medium.png
IHC Results	In paraffin embedded Human Adrenal Medulla shows granular cytoplasmic staining increasing towards the zona reticularis. Recommended concentration: 2-4µg/ml.
ELISA	
Detection Limit	Antibody detection limit dilution 1:64000.
Application Type	Pep-ELISA, IHC, IF, FC

DOCUMENTS

- [Data Sheet](#)

GALLERY IMAGES

