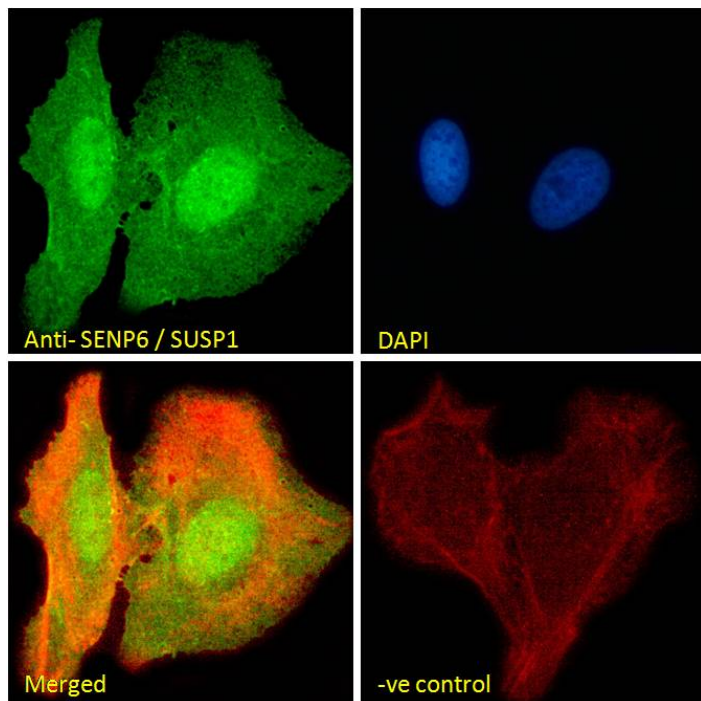


## GOAT ANTI-SENP6 / SUSP1 ANTIBODY

SKU: EB08330



## SPECIFICATIONS

**Formulation** Supplied at 0.5 mg/ml in Tris saline, 0.02% sodium azide, pH7.3 with 0.5% bovine serum albumin.

**Unit Size** 100 µg

**Storage Instructions** Aliquot and store at -20°C. Minimize freezing and thawing.

**Synonym / Alias Names** SUMO1/sentrin specific protease 6|SUMO-1-specific protease|2810017C20Rik|SSP1|KIAA0797|KIAA0389|FLJ11887|FLJ11355|RP1-134M13.1|SUMO1/sentrin specific peptidase 6|SUSP1|SENP6

**Usage Summary** **Immunofluorescence:** Strong expression of the protein seen in the nuclei and cytoplasm of U2OS cells. Recommended concentration: 10µg/ml. **Flow Cytometry:** Flow cytometric analysis of U2OS cells. Recommended concentration: 10ug/ml.

**Accession ID** NP\_001093879.1; NP\_056386.2

**Blocking Peptide** EBP08330

<b>Immunogen</b>	Peptide with sequence C-KPKYEPPHYHEN, from the internal region of the protein sequence according to NP_001093879.1; NP_056386.2.
<b>Product Comments</b>	This antibody is expected to recognise both reported isoforms (NP_001093879.1; NP_056386.2).
<b>Peptide Sequence</b>	C-KPKYEPPHYHEN
<b>Purification Method</b>	Purified from goat serum by ammonium sulphate precipitation followed by antigen affinity chromatography using the immunizing peptide.
<b>Shipping Instructions</b>	Refrigerated
<b>Predicted Species</b>	Human, Mouse, Rat, Cow
<b>Reactive Species</b>	Human
<b>Human Gene ID</b>	26054
<b>Mouse Gene ID</b>	215351
<b>Rat Gene ID</b>	300860
<b>Product Grade</b>	<a href="https://prod-vector-labs-pimcore-assets.s3.us-east-1.amazonaws.com/assets/products/image/elite_medium.png">https://prod-vector-labs-pimcore-assets.s3.us-east-1.amazonaws.com/assets/products/image/elite_medium.png</a>
<b>ELISA Detection Limit</b>	Antibody detection limit dilution 1:32000.
<b>Application Type</b>	Pep-ELISA, IF, FC

## DOCUMENTS

- [Data Sheet](#)

## GALLERY IMAGES

