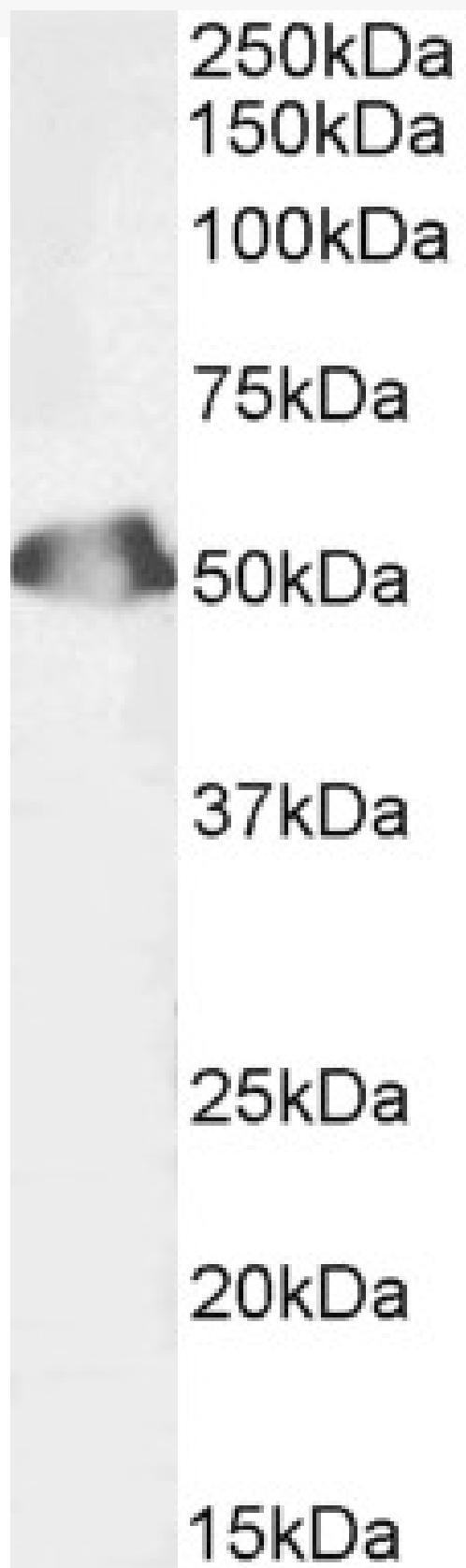


GOAT ANTI-SEPT6, BIOTINYLATED ANTIBODY

SKU: EB08932-B



SPECIFICATIONS

Formulation	Supplied at 0.5 mg/ml in Tris saline, 0.02% sodium azide, pH7.3 with 0.5% bovine serum albumin.
Unit Size	100 µg
Storage Instructions	Aliquot and store at -20°C. Minimize freezing and thawing.
Synonym / Alias Names	SEPT6 septin 6 KIAA0128 MGC16619 MGC20339 SEP2 SEPT2 septin 2
Accession ID	NP_665798.1; NP_055944.2; NP_665801.1
Blocking Peptide	EBP08932-B
Immunogen	Peptide with sequence C-DEVNAFKQRKTA., from the internal region of the protein sequence according to NP_665798.1; NP_055944.2; NP_665801.1.
Product Comments	This antibody is expected to recognize the reported isoforms NP_665798.1, NP_055944.2 and NP_665801.1. Reported variants NP_665799.1 and NP_665798.1 represent identical protein.
Peptide Sequence	C-DEVNAFKQRKTA.
Purification Method	Purified from goat serum by ammonium sulphate precipitation followed by antigen affinity chromatography using the immunizing peptide.
Shipping Instructions	Refrigerated
Predicted Species	Human, Dog, Cow
Reactive Species	Human
Human Gene ID	23157
Product Grade	https://prod-vector-labs-pimcore-assets.s3.us-east-1.amazonaws.com/assets/products/image/elite_medium.png
ELISA Detection Limit	Antibody detection limit dilution 1:4000.
Western Blot	Approx 50kDa band observed in Human Testis lysates (calculated MW of 49.7kDa according to NP_055944.2). Recommended concentration: 0.03-1µg/ml.
Application Type	Pep-ELISA, WB

DOCUMENTS

- [Data Sheet](#)

GALLERY IMAGES

