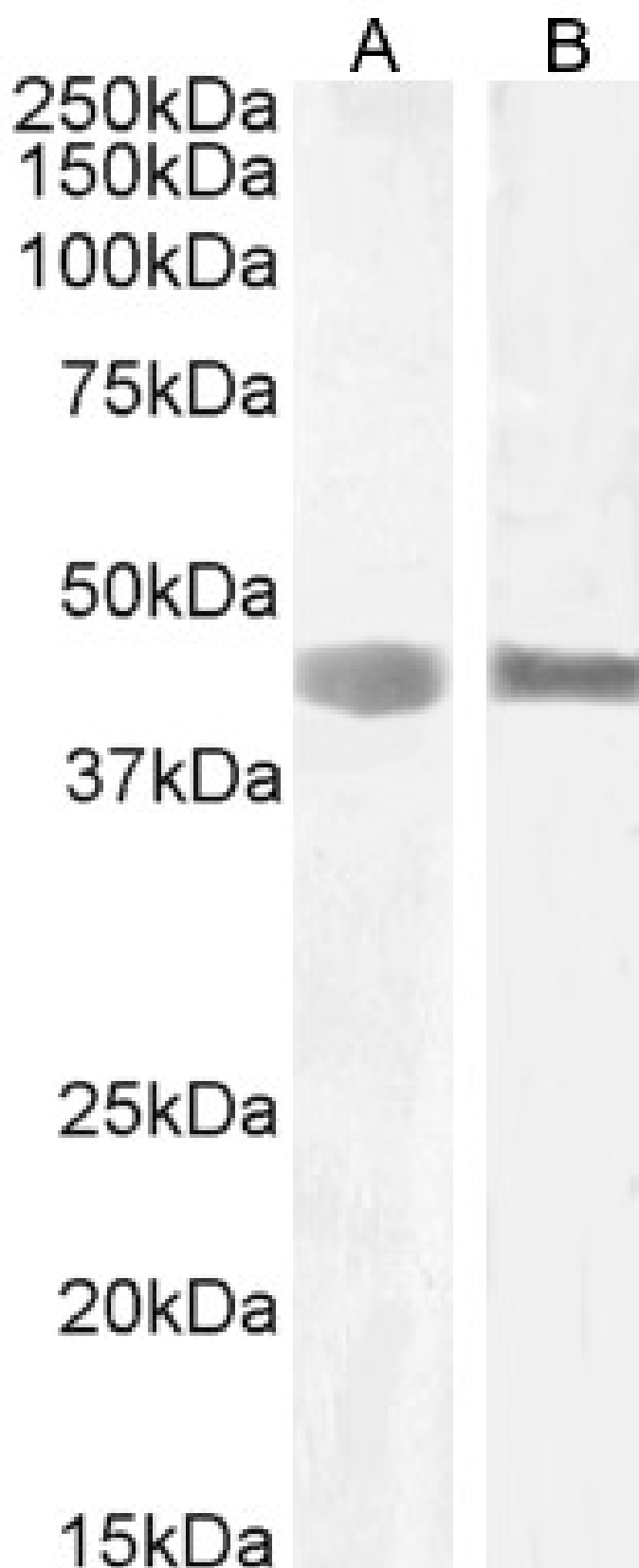


GOAT ANTI-SEPTIN 1 / SEPT1 ANTIBODY

SKU: EB07412



SPECIFICATIONS

Formulation	Supplied at 0.5 mg/ml in Tris saline, 0.02% sodium azide, pH7.3 with 0.5% bovine serum albumin.
Unit Size	100 µg
Storage Instructions	Aliquot and store at -20°C. Minimize freezing and thawing.
Synonym / Alias Names	serologically defined breast cancer antigen NY-BR-24 differentiation 6 (deoxyguanosine triphosphate triphosphohydrolase) SEP1 PNUTL3 MGC20394 LARP DIFF6 septin 1 SEPT1
Accession ID	NP_443070.6
Blocking Peptide	EBP07412
Immunogen	Peptide with sequence C-GARDRASRSKLSRQ, from the internal region of the protein sequence according to NP_443070.6.
Peptide Sequence	C-GARDRASRSKLSRQ
Purification Method	Purified from goat serum by ammonium sulphate precipitation followed by antigen affinity chromatography using the immunizing peptide.
Shipping Instructions	Refrigerated
Predicted Species	Human, Mouse, Rat, Dog
Reactive Species	Human
Human Gene ID	1731
Mouse Gene ID	54204
Rat Gene ID	293507
Product Grade	https://prod-vector-labs-pimcore-assets.s3.us-east-1.amazonaws.com/assets/products/image/elite_medium.png
IHC Results	Paraffin embedded Human Spleen. Recommended concentration: 6-8µg/ml.
ELISA Detection Limit	Antibody detection limit dilution 1:32000.
Western Blot	Approx 42-45kDa band observed in lysates of cell lines HEK293 and MOLT-4 (calculated MW of 42.4kDa according to NP_443070.6). Recommended concentration: 1-3µg/ml. Primary incubation 1 hour. at room temperature.
Application Type	Pep-ELISA, WB, IHC

DOCUMENTS

- [Data Sheet](#)

GALLERY IMAGES

