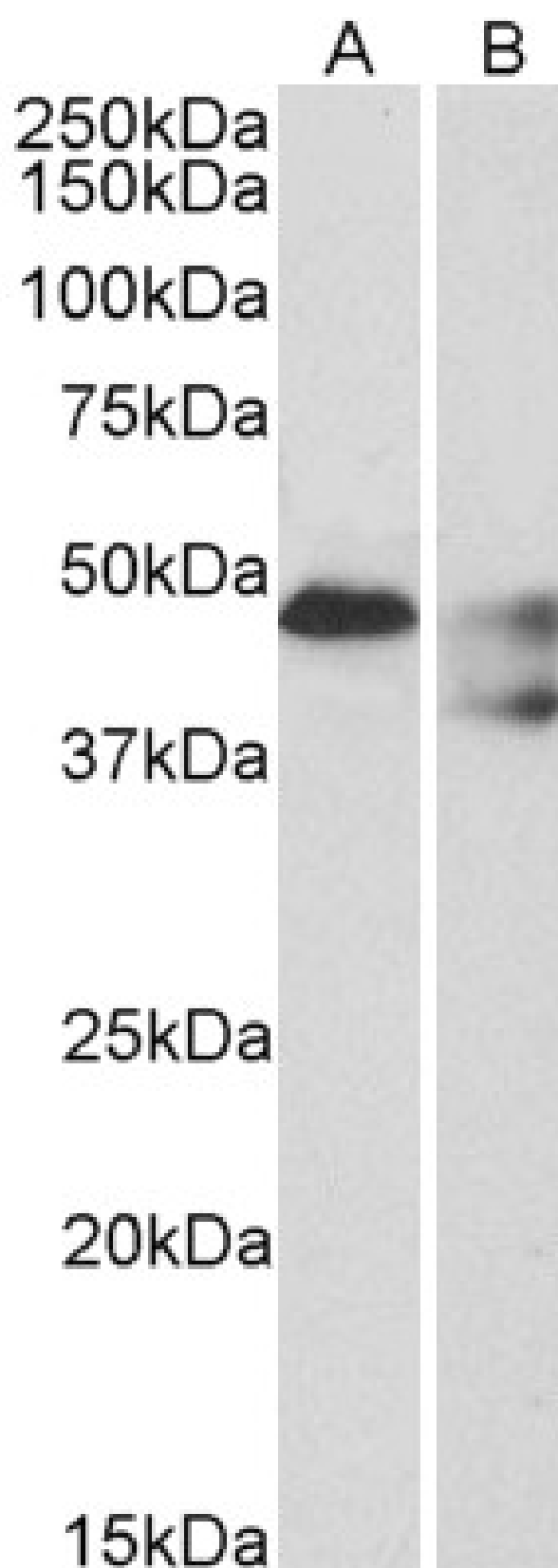


GOAT ANTI-SEROTONIN RECEPTOR 1B / HTR1B ANTIBODY

SKU: EB07259



SPECIFICATIONS

Formulation Supplied at 0.5 mg/ml in Tris saline, 0.02% sodium azide, pH7.3 with 0.5% bovine serum albumin.

Unit Size 100 µg

Storage Instructions Aliquot and store at -20°C. Minimize freezing and thawing.

Synonym /

Alias S12|HTR1DB|HTR1D2|5-HT1DB|5-HT1B|5-hydroxytryptamine (serotonin) receptor 1B|HTR1B

Names

Accession ID NP_000854.1

Blocking Peptide EBP07259

Immunogen Peptide with sequence C-SNEDFKQAFHK, from the C Terminus of the protein sequence according to NP_000854.1.

Peptide Sequence C-SNEDFKQAFHK

Purification Method Purified from goat serum by ammonium sulphate precipitation followed by antigen affinity chromatography using the immunizing peptide.

Shipping Instructions Refrigerated

Predicted Species Human, Mouse, Rat, Cat, Dog, Pig, Cow

Reactive Species Human, Mouse

Human Gene ID 3351

Mouse Gene ID 15551

Rat Gene ID 25075

Product Grade https://prod-vector-labs-pimcore-assets.s3.us-east-1.amazonaws.com/assets/products/image/elite_medium.png

ELISA

Detection Limit Antibody detection limit dilution 1:128000.

Western Blot Approx 48kDa band observed in Human Brain (Cerebellum) and 48+45kDa band observed in Mouse Spinal Cord lysates (calculated MW of 43.6kDa according to NP_000854.1). Recommended concentration: 1-3µg/ml. Primary incubation was 1 hour.

Application Type Pep-ELISA, WB

DOCUMENTS

- [Data Sheet](#)

GALLERY IMAGES

