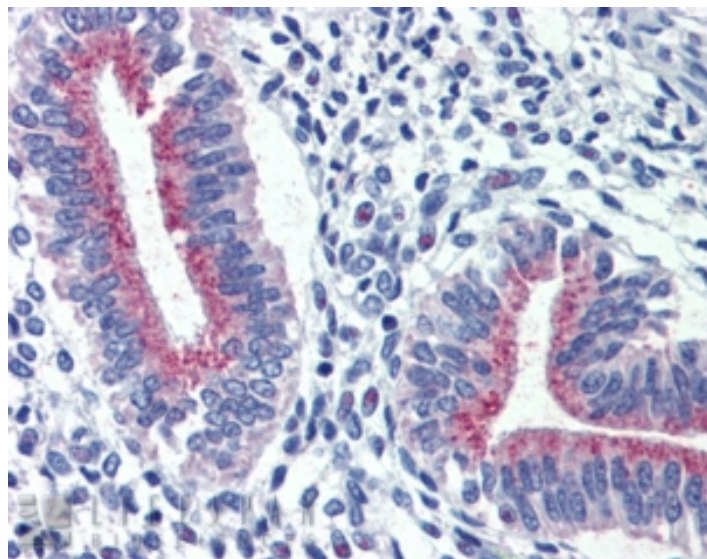


GOAT ANTI-SERPINA6 / CBG ANTIBODY

SKU: EB08545



SPECIFICATIONS

Formulation Supplied at 0.5 mg/ml in Tris saline, 0.02% sodium azide, pH7.3 with 0.5% bovine serum albumin.

Unit Size 100 µg

Storage Instructions Aliquot and store at -20°C. Minimize freezing and thawing.

Synonym / Alias Names transcortin|serine (or cysteine) proteinase inhibitor, clade A (alpha-1 antiproteinase, antitrypsin), member 6|corticosteroid binding globulin|CBG|serpin peptidase inhibitor, clade A (alpha-1 antiproteinase, antitrypsin), member 6|SERPINA6

Accession ID NP_001747.2

Blocking Peptide EBP08545

Immunogen Peptide with sequence C-DLFTNQANFSRIT, from the internal region of the protein sequence according to NP_001747.2.

Peptide Sequence C-DLFTNQANFSRIT

Purification Method Purified from goat serum by ammonium sulphate precipitation followed by antigen affinity chromatography using the immunizing peptide.

Shipping Instructions Refrigerated

Predicted Species	Human
Reactive Species	Human
Human Gene ID	866
Product Grade	https://prod-vector-labs-pimcore-assets.s3.us-east-1.amazonaws.com/assets/products/image/elite_medium.png
IHC Results	In paraffin embedded Human Uterus shows brush border staining of endometrial glands. Recommended concentration, 3-6µg/ml.
ELISA	
Detection Limit	Antibody detection limit dilution 1:1000.
Application Type	Pep-ELISA, IHC

DOCUMENTS

- [Data Sheet](#)

GALLERY IMAGES

