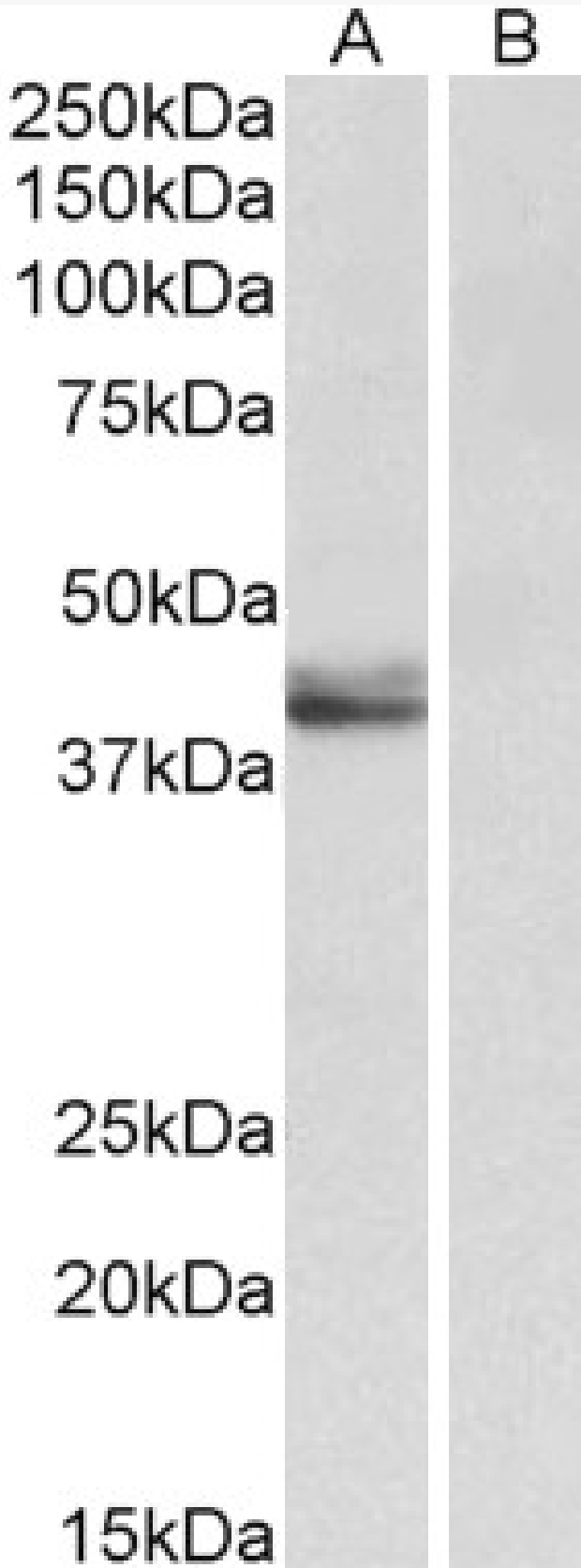


# GOAT ANTI-SERPINB1 (AA130-143) ANTIBODY

**SKU:** EB12397



## SPECIFICATIONS

<b>Formulation</b>	Supplied at 0.5 mg/ml in Tris saline, 0.02% sodium azide, pH7.3 with 0.5% bovine serum albumin.
<b>Unit Size</b>	100 µg
<b>Storage Instructions</b>	Aliquot and store at -20°C. Minimize freezing and thawing.
<b>Synonym / Alias Names</b>	serine (or cysteine) prot protease inhibitor 2 (anti-elastase), monocyte/neutrophil derived peptidase inhibitor 2 leukocyte elastase inhibitor PI2 PI-2 MNEI M/NEI LEI ELANH2 EI serpin peptidase inhibitor, clade B (ovalbumin), member 1 SERPINB1
<b>Accession ID</b>	NP_109591.1
<b>Blocking Peptide</b>	EBP12397
<b>Immunogen</b>	Peptide with sequence C-KTINQWVKGQTEGK, from the internal region of the protein sequence according to NP_109591.1.
<b>Peptide Sequence</b>	C-KTINQWVKGQTEGK
<b>Purification Method</b>	Purified from goat serum by ammonium sulphate precipitation followed by antigen affinity chromatography using the immunizing peptide.
<b>Shipping Instructions</b>	Refrigerated
<b>Predicted Species</b>	Human
<b>Reactive Species</b>	Human
<b>Human Gene ID</b>	1992
<b>Product Grade</b>	<a href="https://prod-vector-labs-pimcore-assets.s3.us-east-1.amazonaws.com/assets/products/image/elite_medium.png">https://prod-vector-labs-pimcore-assets.s3.us-east-1.amazonaws.com/assets/products/image/elite_medium.png</a>
<b>IHC Results</b>	Paraffin embedded Human Spleen (neutrophils). Recommended concentration: 5µg/ml.
<b>ELISA Detection Limit</b>	Antibody detection limit dilution 1:64000.
<b>Western Blot</b>	Approx 42-45kDa bands observed in Human Placenta lysates (calculated MW of 42.7kDa according to NP_109591.1). The fainter 45kDa band likely represents the acetylated form. Both bands are blocked by the immunizing peptide. Recommended concentration: 0.5-2µg/ml.
<b>Application Type</b>	Pep-ELISA, WB, IHC

## DOCUMENTS

- [Data Sheet](#)

## GALLERY IMAGES

